



Recombinant Human Cyclic AMP-responsive element-binding protein 3-like protein 2 (CREB3L2)

Product Code	CSB-EP754617HU
Relevance	Transcription factor involved in unfolded protein response (UPR). In the absence of endoplasmic reticulum (ER) stress, inserted into ER membranes, with N-terminal DNA-binding and transcription activation domains oriented toward the cytosolic face of the membrane. In response to ER stress, transported to the Golgi, where it is cleaved in a site-specific manner by resident proteases S1P/MBTPS1 and S2P/MBTPS2. The released N-terminal cytosolic domain is translocated to the nucleus to effect transcription of specific target genes. Plays a critical role in chondrogenesis by activating the transcription of SEC23A, which promotes the transport and secretion of cartilage matrix proteins, and possibly that of ER biogenesis-related genes. In a neuroblastoma cell line, protects cells from ER stress-induced death. In vitro activates transcription of target genes via direct binding to the CRE site.
Storage	The shelf life is related to many factors, storage state, buffer ingredients, storage temperature and the stability of the protein itself. Generally, the shelf life of liquid form is 6 months at -20°C/-80°C. The shelf life of lyophilized form is 12 months at -20°C/-80°C.
Uniprot No.	Q70SY1
Alias	BBF2 human homolog on chromosome 7
Product Type	Recombinant Protein
Immunogen Species	Homo sapiens (Human)
Purity	Greater than 90% as determined by SDS-PAGE.
Sequence	MEVLESGEQGVLQWDRKLSELSEPGDGEALMYHTHFSELLDEF SQNVLGQLLNDPFLSEKSVSMEVEPSPTSPAPLIQAEHSYSLCEEPRASPFTHITSDSFNDD EVESEKWYLSTDFPSTSIKTEPVTDEPPPGLVPSVTLTITAISTPLEKEEPLEM NTGVDSSCQTIIPKIKLEPHEVDQFLNFSPKEGLSALPVSLWVMDMVSGSTER EYGERAGMSLYHRCCSWLYEIALFLKNKNFASK
Lead Time	Delivery time may differ from different purchasing way or location, please kindly consult your local distributors for specific delivery time.
Research Area	Epigenetics and Nuclear Signaling
Source	E.coli
Gene Names	CREB3L2
Expression Region	1-247aa
Notes	Repeated freezing and thawing is not recommended. Store working aliquots at 4°C for up to one week.

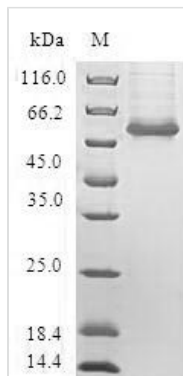


Tag Info N-terminal GST-tagged

Mol. Weight 54.6kDa

Protein Description Full Length of BC063666

Image



(Tris-Glycine gel) Discontinuous SDS-PAGE (reduced) with 5% enrichment gel and 15% separation gel.

Reconstitution

We recommend that this vial be briefly centrifuged prior to opening to bring the contents to the bottom. Please reconstitute protein in deionized sterile water to a concentration of 0.1-1.0 mg/mL. We recommend to add 5-50% of glycerol (final concentration) and aliquot for long-term storage at -20°C/-80°C. Our default final concentration of glycerol is 50%. Customers could use it as reference.