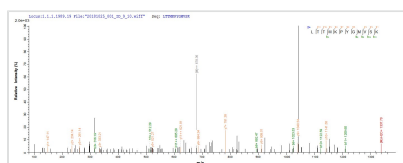




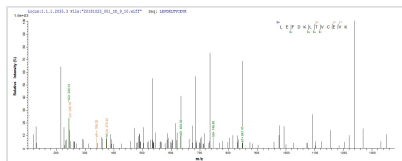
Recombinant Human metapneumovirus Matrix protein (M)

Product Code	CSB-EP761526HDAM
Abbreviation	M
Storage	The shelf life is related to many factors, storage state, buffer ingredients, storage temperature and the stability of the protein itself. Generally, the shelf life of liquid form is 6 months at -20°C/-80°C. The shelf life of lyophilized form is 12 months at -20°C/-80°C.
Uniprot No.	Q6WB99
Storage Buffer	Tris-based buffer?50% glycerol
Product Type	Recombinant Protein
Immunogen Species	Human metapneumovirus (strain CAN97-83) (HMPV)
Purity	Greater than 85% as determined by SDS-PAGE.
Sequence	MESYLVDTYQGIPYTAAVQVDLVEKDLLPASLTIWFPLFQANTPPAVLLDQLKT LTITTLAASQSGPILKVNASQAAMSVLPKKFEVNATVALDEYSKLEFDKLT CEVKTVYLTMMKPYGMVSKFVSSAKPVGKKTHDLIALCDFMDLEKNTPVTIPAF IKSVSIKESATVEAAISSEADQALTQAKIAPYAGLIMIMTMNPNKGIFKKLGAG TQVIVELGAYVQAESISKICKTWSHQGTRYVLKSR
Lead Time	3-7 business days
Research Area	Signal Transduction
Source	E.coli
Gene Names	M
Protein Names	Recommended name: Matrix protein
Expression Region	1-254aa
Notes	Repeated freezing and thawing is not recommended. Store working aliquots at 4°C for up to one week.
Tag Info	N-terminal 10xHis-tagged and C-terminal Myc-tagged
Mol. Weight	35.1 kDa
Protein Description	Full Length

Image



Based on the SEQUEST from database of E.coli host and target protein, the LC-MS/MS Analysis result of CSB-EP761526HDAM could indicate that this peptide derived from E.coli-expressed Human metapneumovirus (strain CAN97-83) (HMPV) M.



Based on the SEQUEST from database of E.coli host and target protein, the LC-MS/MS Analysis result of CSB-EP761526HDAM could indicate that this peptide derived from E.coli-expressed Human metapneumovirus (strain CAN97-83) (HMPV) M.

Reconstitution

We recommend that this vial be briefly centrifuged prior to opening to bring the contents to the bottom. Please reconstitute protein in deionized sterile water to a concentration of 0.1-1.0 mg/mL. We recommend to add 5-50% of glycerol (final concentration) and aliquot for long-term storage at -20°C/-80°C. Our default final concentration of glycerol is 50%. Customers could use it as reference.