

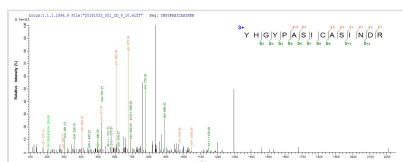


Recombinant Mycobacterium tuberculosis

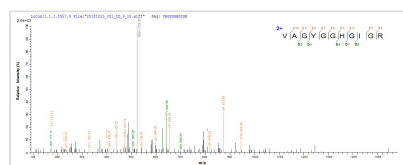
Methionine aminopeptidase 1 (map-1)

Product Code	CSB-EP765906MVZ
Abbreviation	map-1
Storage	The shelf life is related to many factors, storage state, buffer ingredients, storage temperature and the stability of the protein itself. Generally, the shelf life of liquid form is 6 months at -20°C/-80°C. The shelf life of lyophilized form is 12 months at -20°C/-80°C.
Uniprot No.	P9WK20
Storage Buffer	Tris-based buffer?50% glycerol
Product Type	Recombinant Protein
Immunogen Species	Mycobacterium tuberculosis (strain CDC 1551 / Oshkosh)
Purity	Greater than 90% as determined by SDS-PAGE.
Sequence	MRPLARLRGRRVVPQRSAGELDAMAAAGAVVAAALRAIRAAAAPGTSSLSD EIAESVIRESGATPSFLGYHGYPASICASINDRVVHGIPSTAENVLAPGDLVSDC GAVLDGWHGDAAITFGVGALSDADEALSEATRESLQAGIAMVVGNRLTDVA HAIETGTRAAELRYGRSFGIVAGYGGHIGRQMHMDPFLPNEGAPGRGPLLA AGSVLAIEPMLTLGTTKTVVLDDKWTVTADGSRAAHWEHTVAVTDDGPRILT LG
Lead Time	3-7 business days
Research Area	Signal Transduction
Source	E.coli
Gene Names	map-1
Protein Names	Recommended name: Methionine aminopeptidase 1 Short name= MAP EC= 3.4.11.18Alternative name(s): Peptidase M
Expression Region	1-266aa
Notes	Repeated freezing and thawing is not recommended. Store working aliquots at 4°C for up to one week.
Tag Info	N-terminal 10xHis-tagged
Mol. Weight	32.9 kDa
Protein Description	Full Length

Image



Based on the SEQUEST from database of E.coli host and target protein, the LC-MS/MS Analysis result of CSB-EP765906MVZ could indicate that this peptide derived from E.coli-expressed Mycobacterium tuberculosis (strain CDC 1551 / Oshkosh) map-1.



Based on the SEQUEST from database of E.coli host and target protein, the LC-MS/MS Analysis result of CSB-EP765906MVZ could indicate that this peptide derived from E.coli-expressed Mycobacterium tuberculosis (strain CDC 1551 / Oshkosh) map-1.

Description

Our Recombinant Mycobacterium tuberculosis map-1 is a carefully crafted research tool that precisely mimics the native Methionine aminopeptidase 1 (MetAP 1; Peptidase M) protein found in the Mycobacterium tuberculosis strain CDC 1551 / Oshkosh. This protein is known for its role in the area of signal transduction, making it a valuable resource for related research endeavors.

This recombinant protein, produced in E.coli, offers a full-length representation, encompassing the 1-266aa expression region of the Methionine aminopeptidase 1. Featuring an N-terminal 10xHis-tag, the protein allows for enhanced detection and purification during experimental procedures. The purity of the Recombinant Mycobacterium tuberculosis map-1 is above 90%, as determined by SDS-PAGE, affirming its quality and suitability for your studies. Choose between liquid or lyophilized powder forms based on your research needs and storage facilities.

Reconstitution

We recommend that this vial be briefly centrifuged prior to opening to bring the contents to the bottom. Please reconstitute protein in deionized sterile water to a concentration of 0.1-1.0 mg/mL. We recommend to add 5-50% of glycerol (final concentration) and aliquot for long-term storage at -20°C/-80°C. Our default final concentration of glycerol is 50%. Customers could use it as reference.