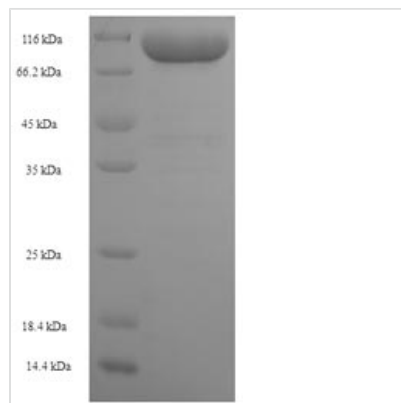




Recombinant Human Keratin, type II cytoskeletal 1b (KRT77)

Product Code	CSB-EP767211HU
Storage	The shelf life is related to many factors, storage state, buffer ingredients, storage temperature and the stability of the protein itself. Generally, the shelf life of liquid form is 6 months at -20°C/-80°C. The shelf life of lyophilized form is 12 months at -20°C/-80°C.
Uniprot No.	Q7Z794
Alias	Cytokeratin-1B ;CK-1BKeratin-77 ;K77Type-II keratin Kb39
Product Type	Recombinant Protein
Immunogen Species	Homo sapiens (Human)
Purity	Greater than 90% as determined by SDS-PAGE.
Sequence	MSHQFSSQSAFSSMSRRVYSTSSSAGSGGGSPAVGSVCYARGRCGGGGYG IHGRGFGSRSLYNLGGSRISINLMGRSTSGFCQGGGVGGFGGGRGFGVGS TGAGGFGGGGFGGAGFGTSNFGLGFGPYCPPGGIQEVTINQSLLLEPLHLEV DPEIQRIKTQEREQIMVLNNKFASFIDKVRFLQEQNQVLQTKWELLQQVNTSTG TNNLEPLENYIGDLRRQVDLLSAEQMRQNAEVRSMDVVEDYKSKYEDEINK RTGSENFVVLKKDVDAAYVSKVDLESRVDTLTGEVNFLLKYLFTELTSQVQTHI SDTNVILSMDNNRSLDLDSDIIDAVRTQYELIAQRSKDEAEALYQTKYQELQITAG RHGDDLKNSKMEIAELNRTVQRLQAEISNVKKQIEQMMSLISDAEERGEQALQ DAWQKLQDLEEALQQSKEELARLLRDYQAMLGVKLSLDVEIATYRQLLEGEES RMSGELQSHVSISVQNSQVSVNNGGAGGGGSGYSGGGYGGGSGGGYGGGRS YRGGGARGRSGGGYSGCGGGGGSGYGGSGRSGRGSSRVQIIQTSTNTSHR RILE
Lead Time	Delivery time may differ from different purchasing way or location, please kindly consult your local distributors for specific delivery time.
Research Area	Signal Transduction
Source	E.coli
Gene Names	KRT77
Expression Region	1-578aa
Notes	Repeated freezing and thawing is not recommended. Store working aliquots at 4°C for up to one week.
Tag Info	N-terminal 6xHis-SUMO-tagged
Mol. Weight	77.9kDa
Protein Description	Full Length
Image	



(Tris-Glycine gel) Discontinuous SDS-PAGE (reduced) with 5% enrichment gel and 15% separation gel.

Reconstitution

We recommend that this vial be briefly centrifuged prior to opening to bring the contents to the bottom. Please reconstitute protein in deionized sterile water to a concentration of 0.1-1.0 mg/mL. We recommend to add 5-50% of glycerol (final concentration) and aliquot for long-term storage at -20°C/-80°C. Our default final concentration of glycerol is 50%. Customers could use it as reference.