



Recombinant Mouse Complement C1r-A subcomponent (C1ra)

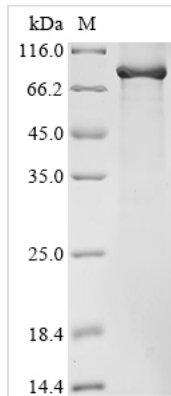
Product Code	CSB-EP806535MOa0
Storage	The shelf life is related to many factors, storage state, buffer ingredients, storage temperature and the stability of the protein itself. Generally, the shelf life of liquid form is 6 months at -20°C/-80°C. The shelf life of lyophilized form is 12 months at -20°C/-80°C.
Uniprot No.	Q8CG16
Form	Liquid or Lyophilized powder
Storage Buffer	If the delivery form is liquid, the default storage buffer is Tris/PBS-based buffer, 5%-50% glycerol. If the delivery form is lyophilized powder, the buffer before lyophilization is Tris/PBS-based buffer, 6% Trehalose.
Product Type	Recombinant Protein
Immunogen Species	Mus musculus (Mouse)
Purity	Greater than 85% as determined by SDS-PAGE.
Sequence	SIYLPQKLYGEVTSPLYPKPYPSDLETTTIVITVPMGYRVKLVFWQFDVEPSEGC FYDYVKISADKQTLGRFCGQLDSPLGNPPGSKEFMSQGNKMLLTFHTDFSNE ENGTIMFYKGFLLAYYQAVDLDECASQPNSSVEEGLQPRCQHLCHNYVGGYFCS CHPGYELQKDGQSCQAECSSELYTEPSGYVSSLEYPQPYPPDLRCNYSIRVE RGLTVHLKFLDPFEIDDHQQVHCPYDQLQIYANGKNLGEFCGKQRPPDLDTSS NAVDLLFFTDESGDSRGWKLHYTTETIKCPQPKALDEFTIIQDPQPQYQFRDYF IVTCKQGYQLMEGNQALLSFTAVCQNDGTWHRAMPCKIKNCGQPQSLNSG DFRYITTKGVTTTYEASIQYHCHEPYKMLTRAGSSSESMRGIYTCTAQQGIWKNE EEGEKMPRCLPVCCKPVNPVTQKERIIRGQPARPGNFPWQAFTTTTHGRGGG ALLGDRWILTAHTIYPKHNNKENDNANPKMLVFLGHTNVEQIKKLGHHPVRR VIIHPDYRQDEPNNFEGDIALLELENSVTLGPELLPICLPDNETFYGQGLMGYVS GFGITEDKLAFLDLRFVRLPVADSEACQRWLQTKKDTSPFSQNMFCSGDPAVQ QDACQGDSGGVFAVRDRNRDIWVATGIVSWGIGCGEGYGFYTKVLNYVDWIK KEMGDEN
Lead Time	Delivery time may differ from different purchasing way or location, please kindly consult your local distributors for specific delivery time.
Research Area	Others
Source	E.coli
Gene Names	C1ra
Expression Region	17-707aa
Notes	Repeated freezing and thawing is not recommended. Store working aliquots at 4°C for up to one week.
Tag Info	N-terminal 6xHis-tagged


Mol. Weight

84.2 kDa

Protein Description

Full Length of Mature Protein

Image


(Tris-Glycine gel) Discontinuous SDS-PAGE (reduced) with 5% enrichment gel and 15% separation gel.

Reconstitution

We recommend that this vial be briefly centrifuged prior to opening to bring the contents to the bottom. Please reconstitute protein in deionized sterile water to a concentration of 0.1-1.0 mg/mL. We recommend to add 5-50% of glycerol (final concentration) and aliquot for long-term storage at -20?/-80?. Our default final concentration of glycerol is 50%. Customers could use it as reference.