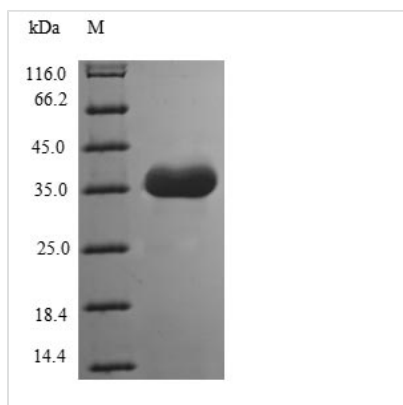




Recombinant Human Tomoregulin-1 (TMEFF1), partial

Product Code	CSB-EP818263HUa0
Relevance	May inhibit NODAL and BMP signaling during neural patterning. May be a tumor suppressor in brain cancers.
Storage	The shelf life is related to many factors, storage state, buffer ingredients, storage temperature and the stability of the protein itself. Generally, the shelf life of liquid form is 6 months at -20°C/-80°C. The shelf life of lyophilized form is 12 months at -20°C/-80°C.
Uniprot No.	Q8IYR6
Product Type	Recombinant Protein
Immunogen Species	Homo sapiens (Human)
Purity	Greater than 85% as determined by SDS-PAGE.
Sequence	SNQPPGGGGGSGGDCPGGKGKSINCSELVRESVVRVCDDESSCKYGGVCK EDGDGLKACQFQCHTNYIPVCGSNGDTYQNECFLRRAACKHQKEITVIARG PCYSDNGSGSGEGEEEGSGAEVHRKHSKCGPCKYKAECDEDAENVGCVCNI DCSGYSFNPVCASDGSSYNNPCFVREASCIKQEQIDIRHLGHCTD TDDTSLLG KKDDGLQYRPDVKDASDQREDVYIGNHMPCPENLNGYCIHGKCEFIYSTQKA SCRCESGYTGQHCEKTD FSI LYV VPSRQKLTHV
Lead Time	3-7 business days
Research Area	Others
Source	E.coli
Gene Names	TMEFF1
Protein Names	H7365 Transmembrane protein with EGF-like and one follistatin-like domain C9orf2
Expression Region	40-330aa
Notes	Repeated freezing and thawing is not recommended. Store working aliquots at 4°C for up to one week.
Tag Info	N-terminal 6xHis-tagged
Mol. Weight	35.5 kDa
Protein Description	Partial
Image	



(Tris-Glycine gel) Discontinuous SDS-PAGE (reduced) with 5% enrichment gel and 15% separation gel.

Reconstitution

We recommend that this vial be briefly centrifuged prior to opening to bring the contents to the bottom. Please reconstitute protein in deionized sterile water to a concentration of 0.1-1.0 mg/mL. We recommend to add 5-50% of glycerol (final concentration) and aliquot for long-term storage at -20°C/-80°C. Our default final concentration of glycerol is 50%. Customers could use it as reference.