



# Recombinant Human Kelch repeat and BTB domain-containing protein 7 (KBTBD7)

<b>Product Code</b>	CSB-EP823893HU
<b>Storage</b>	The shelf life is related to many factors, storage state, buffer ingredients, storage temperature and the stability of the protein itself. Generally, the shelf life of liquid form is 6 months at -20°C/-80°C. The shelf life of lyophilized form is 12 months at -20°C/-80°C.
<b>Uniprot No.</b>	Q8WVZ9
<b>Form</b>	Liquid or Lyophilized powder
<b>Storage Buffer</b>	If the delivery form is liquid, the default storage buffer is Tris/PBS-based buffer, 5%-50% glycerol. If the delivery form is lyophilized powder, the buffer before lyophilization is Tris/PBS-based buffer, 6% Trehalose.
<b>Product Type</b>	Recombinant Human Kelch repeat and BTB domain-containing protein 7 (KBTBD7)
<b>Immunogen Species</b>	Homo sapiens (Human)
<b>Sensitivity</b>	Not Test
<b>Purity</b>	Greater than 85% as determined by SDS-PAGE.
<b>Sequence</b>	<p>MQSREDVPRSRRLASPRGGRRPKRISKPSVSAFFTGPPEELKDTAHSAAALLAQL</p> <p>KSFYDARLLCDVTIEVVTPGSGPGTGRLFSCNRNVLAAACPYFKSMFTGGMY</p> <p>ESQQASVTMHDVDAESFEVLVDYCYTGRVSLSEANVQRLYAASDMLQLEYVR</p> <p>EACASFLARRDLTNCTAILKFADAFDHHKLRSQAQSYIAHNFKQLSRMGSIRES</p> <p>ETLADTLAQLLAVLRDLDSLDESERTVCHVAVQWLEAAAKERGPSAAEVFKCV</p> <p>RWMHFTEEDQDYLEGLLTKPIVKKYCLDVIEGALQMRYGDLLYKSLVPVPNSS</p> <p>SSSSSSNSLVSAENPPQRLGMC AKEMVIFFGHPRDPFLCYDPYSGDIYT MPS</p> <p>PLTSFAHTKTVTSSAVCVSPDHDIYLAAPRKDLWVYKPAQNSWQQQLADRLL</p> <p>CREGMDVAYLNGYIYLGG RDPITGVKLKEVECYSVQRNQWALVAPVPHSFYS</p> <p>FELIVVQNYLYAVNSKRMLCYDPSHNMWLN CASLKRSD FQEACVFNDEIYCIC</p> <p>DIPVMKVYNPARGEWRRISNIPLDSETHNYQIVNHDQKLLITSTTPQWKKNRV</p> <p>TVYEYDTREDQWINIGTMLG LLQFDSGFICLCARVYPSCLEPGQSFITEEDDAR</p> <p>SESSTEWDLDG FSELDSESGSSSSFS DDEVWVQVAPQRNAQDQQGSL</p>
<b>Lead Time</b>	Delivery time may differ from different purchasing way or location, please kindly consult your local distributors for specific delivery time.
<b>Research Area</b>	Cell Biology
<b>Source</b>	E.coli
<b>Gene Names</b>	KBTBD7
<b>Expression Region</b>	1-684aa
<b>Notes</b>	Repeated freezing and thawing is not recommended. Store working aliquots at 4? for up to one week.

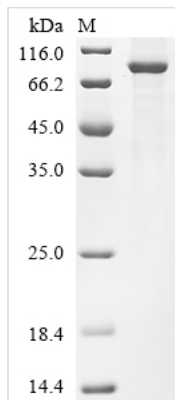


**Tag Info** C-terminal 6xHis-tagged

**Mol. Weight** 84.0 kDa

**Protein Description** Full Length

**Image**



(Tris-Glycine gel) Discontinuous SDS-PAGE (reduced) with 5% enrichment gel and 15% separation gel.

**Reconstitution**

We recommend that this vial be briefly centrifuged prior to opening to bring the contents to the bottom. Please reconstitute protein in deionized sterile water to a concentration of 0.1-1.0 mg/mL. We recommend to add 5-50% of glycerol (final concentration) and aliquot for long-term storage at -20<sup>o</sup>/-80<sup>o</sup>. Our default final concentration of glycerol is 50%. Customers could use it as reference.