

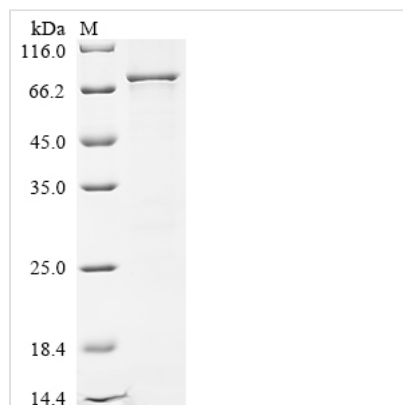


Recombinant Human Methyltransferase-like protein 25 (METTL25)

Product Code	CSB-EP839813HU
Storage	The shelf life is related to many factors, storage state, buffer ingredients, storage temperature and the stability of the protein itself. Generally, the shelf life of liquid form is 6 months at -20°C/-80°C. The shelf life of lyophilized form is 12 months at -20°C/-80°C.
Uniprot No.	Q8N6Q8
Form	Liquid or Lyophilized powder
Storage Buffer	If the delivery form is liquid, the default storage buffer is Tris/PBS-based buffer, 5%-50% glycerol. If the delivery form is lyophilized powder, the buffer before lyophilization is Tris/PBS-based buffer, 6% Trehalose.
Product Type	Recombinant Human Methyltransferase-like protein 25(METTL25)
Immunogen Species	Homo sapiens (Human)
Purity	Greater than 85% as determined by SDS-PAGE.
Sequence	MAASCPLPVTPLPTLRAKLQGLLQFLRDALSISNAHTVDFYTESVWEELVDLP PETVLAALRKSASETEALPSETRPLVEAEWEAGMTDFPKIFCETSQKLVSVEAF ALAAKYYSVQNLGICTPFEQLLVALRGNQNQRIGENQKAVEFMNMKKSHEVQ AMSELISSIADYYGIKQVIDLGSGKGYLSSFLSLKYGLKVYIDSSNTNTHGAE RNRKLKHKHWKLCHAQSRLDVNGLALKMAKERKVQNKVKNKADTEEVFNNST NQEKMPTSAILPDFSGSVISNIRNQMETLHSQPHQEENLCFENSFSLINLLPINA VEPTSSQQIPNRETSEANKERRKMTSKSSESNIYSPLTSFITADSELHDIKDLE DCLMVGLHTCGDLAPNTRLRIFTSNSEIKGVCSVGCCYHLLSEEFENQHKERTQ EKWGFPMCHYLKEERWCCGRNARMSACLALERVAAGQGLPTESLFYRAVLQ DIKDCYGITKCDRHVGKIYSKCSSLFDYVRRSLKKLGLDESKLPEKIIMNYYEKY KPRMNELEAFNMLKVVLAPCIETLILLDRCLCYLKEQEDIAWSALVKLFDPVKSPR CYAVIALKKQQ
Lead Time	3-7 business days
Research Area	Others
Source	E.coli
Gene Names	METTL25
Expression Region	1-603aa
Notes	Repeated freezing and thawing is not recommended. Store working aliquots at 4°C for up to one week.
Tag Info	N-terminal 10xHis-tagged and C-terminal Myc-tagged
Mol. Weight	75.7 kDa
Protein Description	Full Length



Image



(Tris-Glycine gel) Discontinuous SDS-PAGE (reduced) with 5% enrichment gel and 15% separation gel.

Description

The expression region of this recombinant Human METTL25 covers amino acids 1-603. This METTL25 protein is expected to have a theoretical molecular weight of 75.7 kDa. Expression of this METTL25 protein is conducted in e.coli. The METTL25 coding gene included the N-terminal 10xHis tag and C-terminal Myc tag, which simplifies the detection and purification processes of the recombinant METTL25 protein in following stages of expression and purification.

Reconstitution

We recommend that this vial be briefly centrifuged prior to opening to bring the contents to the bottom. Please reconstitute protein in deionized sterile water to a concentration of 0.1-1.0 mg/mL. We recommend to add 5-50% of glycerol (final concentration) and aliquot for long-term storage at -20^o/-80^o. Our default final concentration of glycerol is 50%. Customers could use it as reference.