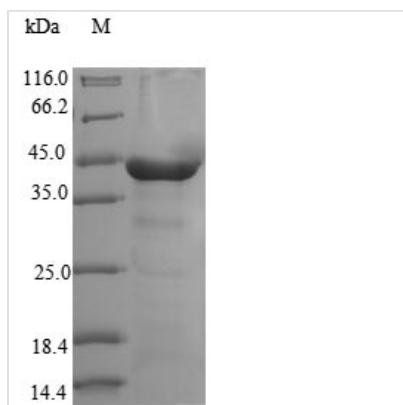




Recombinant Human Cytoplasmic dynein 2 light intermediate chain 1 (DYNC2LI1)

Product Code	CSB-EP844722HU
Relevance	May function as a motor for intraflagellar retrograde transport. Functions in cilia biogenesis (By similarity).
Abbreviation	DYNC2LI1
Storage	The shelf life is related to many factors, storage state, buffer ingredients, storage temperature and the stability of the protein itself. Generally, the shelf life of liquid form is 6 months at -20°C/-80°C. The shelf life of lyophilized form is 12 months at -20°C/-80°C.
Uniprot No.	Q8TCX1
Product Type	Recombinant Protein
Immunogen Species	Homo sapiens (Human)
Purity	Greater than 90% as determined by SDS-PAGE.
Sequence	MPSETLWEIAKAEVEKRGINGSEGDGAEIAEKFVFFIGSKNGGKTTIILRCLDRD EPPKPTLALEYTYGRRAKGHNTPKDIAHFWELGGGTSLLDLISIPITGDTLRFTS LVLVLDLSKPNDLWPTMENLLQATKSHVDKVMKLGKTNKAVSEMRQKIWNN MPKDHPQDHELIDPFPVPLVIIGSKYDVFQDFESEKRVICKTLRFVAHYYGAS LMFTSKSEALLLKIRGVINQLAFGIDKSKSICVDQNKPLFITAGLDSFGQIGSPPV PENDIGKLHAHSPMELWKKVYEKLFPPKSINTLKDIDPARDPQYAENEVDDEM RIQKDLELEQYKRSSSKSWKQIELDS
Lead Time	Delivery time may differ from different purchasing way or location, please kindly consult your local distributors for specific delivery time.
Research Area	Signal Transduction
Source	E.coli
Gene Names	DYNC2LI1
Protein Names	Recommended name: Cytoplasmic dynein 2 light intermediate chain 1 Short name= Dynein 2 light intermediate chain
Expression Region	1-352aa
Notes	Repeated freezing and thawing is not recommended. Store working aliquots at 4°C for up to one week.
Tag Info	N-terminal 10xHis-tagged and C-terminal Myc-tagged
Mol. Weight	44.8kDa
Protein Description	Full Length of Isoform 2
Image	



(Tris-Glycine gel) Discontinuous SDS-PAGE (reduced) with 5% enrichment gel and 15% separation gel.

Reconstitution

We recommend that this vial be briefly centrifuged prior to opening to bring the contents to the bottom. Please reconstitute protein in deionized sterile water to a concentration of 0.1-1.0 mg/mL. We recommend to add 5-50% of glycerol (final concentration) and aliquot for long-term storage at -20°C/-80°C. Our default final concentration of glycerol is 50%. Customers could use it as reference.