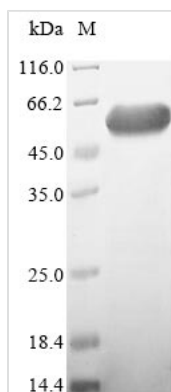




Recombinant Human Cytosolic endo-beta-N-acetylglucosaminidase (ENGASE)

Product Code	CSB-EP854117HU
Relevance	Endoglycosidase that releases N-glycans from glycoproteins by cleaving the beta-1,4-glycosidic bond in the N,N'-diacetylchitobiose core. Involved in the processing of free oligosaccharides in the cytosol.
Abbreviation	ENGASE
Storage	The shelf life is related to many factors, storage state, buffer ingredients, storage temperature and the stability of the protein itself. Generally, the shelf life of liquid form is 6 months at -20°C/-80°C. The shelf life of lyophilized form is 12 months at -20°C/-80°C.
Uniprot No.	Q8NFI3
Product Type	Recombinant Protein
Immunogen Species	Homo sapiens (Human)
Purity	Greater than 85% as determined by SDS-PAGE.
Sequence	MEAAAVTVTRSATRRRRRQLQGLAAPEAGTQEEQEDQEPRPRRRRPGRSIK DEEEETVFREVVSFSPDPLPVRYDCKDTTKPISFYLSSELLAWKPRLEDGFN VALEPLACRQPPLSSQRPRTLLCHDMMGGYLLDRFIQGSVVQTPYAFYHWQC IDVFVYFSHHTVTIPVVGWNTAHRHGVCVLGTFTIEWNEGGRLCFAFLAGDE RSYQAVADRLVQITQFFRFDGWLINIENSLSLAAVGNMPPFLRYLTTLQHRQVP GGLVLWYDSVVQSGQLKWQDELNQHNRFVFDSCDGFFTNYNWREEHLERM LGQAGERRADVVGVDVFARGNVVGGFRFDTDKSLELIRKHGFSVALFAPSCS VFPGVGNLLCC
Lead Time	3-7 business days
Research Area	others
Source	E.coli
Gene Names	ENGASE
Protein Names	Recommended name: Cytosolic endo-beta-N-acetylglucosaminidase Short name= ENGase EC= 3.2.1.96
Expression Region	1-377aa
Notes	Repeated freezing and thawing is not recommended. Store working aliquots at 4°C for up to one week.
Tag Info	N-terminal 6xHis-SUMO-tagged
Mol. Weight	59.1 kDa
Protein Description	Full Length of Isoform 2
Image	



(Tris-Glycine gel) Discontinuous SDS-PAGE (reduced) with 5% enrichment gel and 15% separation gel.

Reconstitution

We recommend that this vial be briefly centrifuged prior to opening to bring the contents to the bottom. Please reconstitute protein in deionized sterile water to a concentration of 0.1-1.0 mg/mL. We recommend to add 5-50% of glycerol (final concentration) and aliquot for long-term storage at -20°C/-80°C. Our default final concentration of glycerol is 50%. Customers could use it as reference.