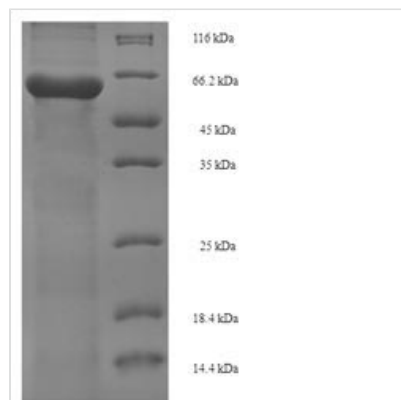




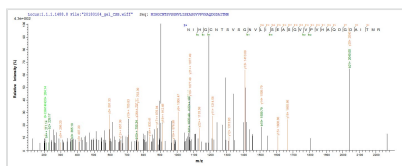
Recombinant Chamaecyparis obtusa Pectate lyase 1

| | |
|----------------------------|----------------------------------------------------------------------------------------------------------------------------------------------------------------------------------------------------------------------------------------------------------------------------------------------------------------------------------------------------------------------------------------|
| Product Code | CSB-EP856862CHAX |
| Relevance | Has pectate lyase activity. |
| Storage | The shelf life is related to many factors, storage state, buffer ingredients, storage temperature and the stability of the protein itself. Generally, the shelf life of liquid form is 6 months at -20°C/-80°C. The shelf life of lyophilized form is 12 months at -20°C/-80°C. |
| Uniprot No. | Q96385 |
| Product Type | Recombinant Protein |
| Immunogen Species | Chamaecyparis obtusa (Hinoki false-cypress) |
| Purity | Greater than 90% as determined by SDS-PAGE. |
| Sequence | DNPIDSCWRGDANWDQNRMKLADCAVGFGSSAMGGKGGAFYTVTSSDDDP VNPAPGTLRYGATRERSLWIIFSKNLNIKLNMPYIAGNKTIDGRGAEVHIGNGG PCLFMRTVSHVILHGLNIHGCNTSVSGNVLISEASGVVPVHAQDGDITMRNVT DVWIDHNSLSDSSDGLVDVTLASTGVTISNNHFFNHHKVMMLGHSDIYSDDKS MKVTVAFNQFGPNAGQRMPRARYGLIHVANNYDPWSIYAIGGSSNPTILSEG NSFTAPNDSDKKEVTRRVGCESPSTCANWVWRSTQDSFNNGAYFVSSGKNE GTNIYNNNEAFKVENGSAAPQLTKNAGVLTCLSKPCS |
| Lead Time | 3-7 business days |
| Source | E.coli |
| Expression Region | 22-375aa |
| Notes | Repeated freezing and thawing is not recommended. Store working aliquots at 4°C for up to one week. |
| Tag Info | N-terminal 6xHis-SUMO-tagged |
| Mol. Weight | 54.1 kDa |
| Protein Description | Full Length of Mature Protein |

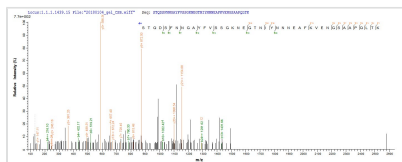
Image



(Tris-Glycine gel) Discontinuous SDS-PAGE (reduced) with 5% enrichment gel and 15% separation gel.



Based on the SEQUEST from database of E.coli host and target protein, the LC-MS/MS Analysis result of CSB-EP856862CHAX could indicate that this peptide derived from E.coli-expressed *Chamaecyparis obtusa* (Hinoki false-cypress) N/A.



Based on the SEQUEST from database of E.coli host and target protein, the LC-MS/MS Analysis result of CSB-EP856862CHAX could indicate that this peptide derived from E.coli-expressed *Chamaecyparis obtusa* (Hinoki false-cypress) N/A.

Reconstitution

We recommend that this vial be briefly centrifuged prior to opening to bring the contents to the bottom. Please reconstitute protein in deionized sterile water to a concentration of 0.1-1.0 mg/mL. We recommend to add 5-50% of glycerol (final concentration) and aliquot for long-term storage at -20°C/-80°C. Our default final concentration of glycerol is 50%. Customers could use it as reference.