

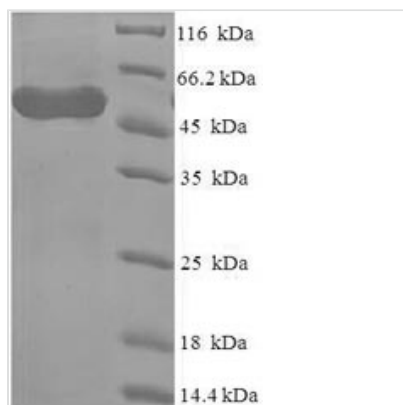


Recombinant Human Methylosome protein 50 (WDR77), partial

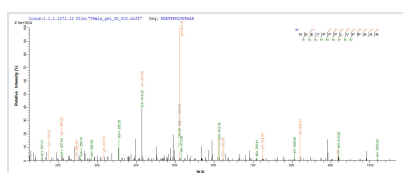
Product Code	CSB-EP859030HU
Relevance	Non-catalytic component of the 20S PRMT5-containing methyltransferase complex, which modifies specific arginines to dimethylarginines in several spliceosomal Sm proteins and histones. This modification targets Sm proteins to the survival of motor neurons (SMN) complex for assembly into small nuclear ribonucleoprotein core particles. Might play a role in transcription regulation. The 20S PRMT5-containing methyltransferase complex also methylates the Piwi proteins (PIWIL1, PIWIL2 and PIWIL4), methylation of Piwi proteins being required for the interaction with Tudor domain-containing proteins and subsequent localization to the meiotic nuage.
Storage	The shelf life is related to many factors, storage state, buffer ingredients, storage temperature and the stability of the protein itself. Generally, the shelf life of liquid form is 6 months at -20°C/-80°C. The shelf life of lyophilized form is 12 months at -20°C/-80°C.
Uniprot No.	Q9BQA1
Alias	Androgen receptor cofactor p44WD repeat-containing protein 77p44/Mep50
Product Type	Recombinant Protein
Immunogen Species	Homo sapiens (Human)
Purity	Greater than 90% as determined by SDS-PAGE.
Sequence	MRKETPPPLVPPAAREWNLPNAPACMERQLEAARYRSDGALLLGASSLSGR CWAGSLWLFDKPCAAPNEGFCSSAGVQTEAGVADLTWVGERGILVASDSGAV ELWELDENETLIVSKFCKYEHDDIVSTVSVLSSGTQAVSGSKDICIKVWDLAQQ VVLSSYRAHAAQVTCVAASPHKDSVFLSCSEDNRILLWDTRCPKPPASQIGCSA PGYLPTSLAWHPQQSEVFVFGDENGTVSLVDTKSTSCVLSSAVHSQCVTGLV FSPHSVPFLASLSEDCSLAVLDSSLSELFERSQAHRDFVRDATWSPLNHSL
Lead Time	3-7 business days
Research Area	Epigenetics and Nuclear Signaling
Source	E.coli
Gene Names	WDR77
Expression Region	1-312aa
Notes	Repeated freezing and thawing is not recommended. Store working aliquots at 4°C for up to one week.
Tag Info	N-terminal 6xHis-SUMO-tagged
Mol. Weight	49.6kDa
Protein Description	Partial



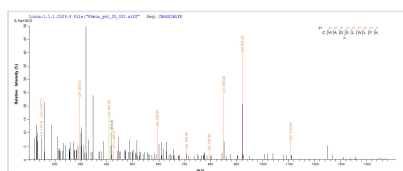
Image



(Tris-Glycine gel) Discontinuous SDS-PAGE (reduced) with 5% enrichment gel and 15% separation gel.



Based on the SEQUEST from database of E.coli host and target protein, the LC-MS/MS Analysis result of CSB-EP859030HU could indicate that this peptide derived from E.coli-expressed Homo sapiens (Human) WDR77.



Based on the SEQUEST from database of E.coli host and target protein, the LC-MS/MS Analysis result of CSB-EP859030HU could indicate that this peptide derived from E.coli-expressed Homo sapiens (Human) WDR77.

Reconstitution

We recommend that this vial be briefly centrifuged prior to opening to bring the contents to the bottom. Please reconstitute protein in deionized sterile water to a concentration of 0.1-1.0 mg/mL. We recommend to add 5-50% of glycerol (final concentration) and aliquot for long-term storage at -20°C/-80°C. Our default final concentration of glycerol is 50%. Customers could use it as reference.