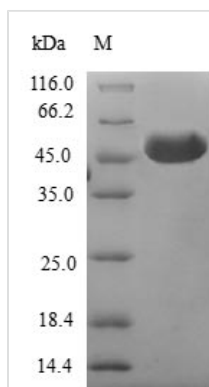




Recombinant Human B9 domain-containing protein 2 (B9D2)

Product Code	CSB-EP861077HU
Relevance	Component of the tectonic-like complex, a complex localized at the transition zone of primary cilia and acting as a barrier that prevents diffusion of transmembrane proteins between the cilia and plasma membranes.
Abbreviation	B9D2
Storage	The shelf life is related to many factors, storage state, buffer ingredients, storage temperature and the stability of the protein itself. Generally, the shelf life of liquid form is 6 months at -20°C/-80°C. The shelf life of lyophilized form is 12 months at -20°C/-80°C.
Uniprot No.	Q9BPU9
Alias	MKS1-related protein 2
Product Type	Recombinant Protein
Immunogen Species	Homo sapiens (Human)
Purity	Greater than 90% as determined by SDS-PAGE.
Sequence	MAEVHVIGQIIGASGFSESSLFCKWGIHTGAAWKLLSGVREGQTQVDTPQIGD MAYWSPIDLHFATKGLQGWPRLHFQVWSQDSFGRCQLAGYGFCVHPSSPG THQLACPTWRPLGWSWREQLARAFVGGGPQLLHGDTIYSGADRYRLHTAAGG TVHLEIGLLLRNFDYRGVEC
Lead Time	Delivery time may differ from different purchasing way or location, please kindly consult your local distributors for specific delivery time.
Research Area	Signal Transduction
Source	E.coli
Gene Names	B9D2
Protein Names	Recommended name: B9 domain-containing protein 2 Alternative name(s): MKS1-related protein 2
Expression Region	1-175aa
Notes	Repeated freezing and thawing is not recommended. Store working aliquots at 4°C for up to one week.
Tag Info	N-terminal GST-tagged
Mol. Weight	46.3kDa
Protein Description	Full Length
Image	



(Tris-Glycine gel) Discontinuous SDS-PAGE (reduced) with 5% enrichment gel and 15% separation gel.

Reconstitution

We recommend that this vial be briefly centrifuged prior to opening to bring the contents to the bottom. Please reconstitute protein in deionized sterile water to a concentration of 0.1-1.0 mg/mL. We recommend to add 5-50% of glycerol (final concentration) and aliquot for long-term storage at -20°C/-80°C. Our default final concentration of glycerol is 50%. Customers could use it as reference.