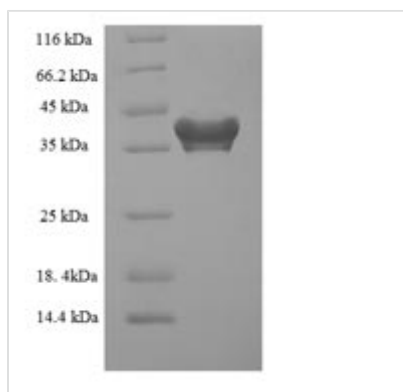




Recombinant Human Programmed cell death protein 10 (PDCD10)

Product Code	CSB-EP861141HU
Relevance	Promotes cell proliferation. Modulates apoptotic pathways. Increases mitogen-activated protein kinase activity and STK26 activity. Important for cell migration, and for normal structure and assbly of the Golgi complex. Important for KDR/VEGFR2 signaling. Increases the stability of KDR/VEGFR2 and prevents its breakdown. Required for normal cardiovascular development. Required for normal angiogenesis, vasculogenesis and hatopoiesis during bryonic development .
Storage	The shelf life is related to many factors, storage state, buffer ingredients, storage temperature and the stability of the protein itself. Generally, the shelf life of liquid form is 6 months at -20°C/-80°C. The shelf life of lyophilized form is 12 months at -20°C/-80°C.
Uniprot No.	Q9BUL8
Alias	Cerebral cavernous malformations 3 protein;TF-1 cell apoptosis-related protein 15
Product Type	Recombinant Protein
Immunogen Species	Homo sapiens (Human)
Purity	Greater than 90% as determined by SDS-PAGE.
Sequence	MRMTMEEMKNEAETTSMVSMPLYAVMYPVFNELERVNLSAAQTLRAAFIKAE KENPGLTQDIIMKILEKKSVEVNFTESSLRMAADDVEEYMIERPEPEFQDLNEK ARALKQILSKIPDEINDRVRLQTIKDIASAIKELLDTVNNVFKKYQYQNRRALEH QKKEFVKYSKSFSDTLKTYFKDGGKAINVFVSANRLIHQTNLILQTFKTVA
Lead Time	3-7 business days
Research Area	Signal Transduction
Source	E.coli
Gene Names	PDCD10
Expression Region	1-212aa
Notes	Repeated freezing and thawing is not recommended. Store working aliquots at 4°C for up to one week.
Tag Info	N-terminal 6xHis-SUMO-tagged
Mol. Weight	40.7kDa
Protein Description	Full Length
Image	



(Tris-Glycine gel) Discontinuous SDS-PAGE (reduced) with 5% enrichment gel and 15% separation gel.

Reconstitution

We recommend that this vial be briefly centrifuged prior to opening to bring the contents to the bottom. Please reconstitute protein in deionized sterile water to a concentration of 0.1-1.0 mg/mL. We recommend to add 5-50% of glycerol (final concentration) and aliquot for long-term storage at -20°C/-80°C. Our default final concentration of glycerol is 50%. Customers could use it as reference.