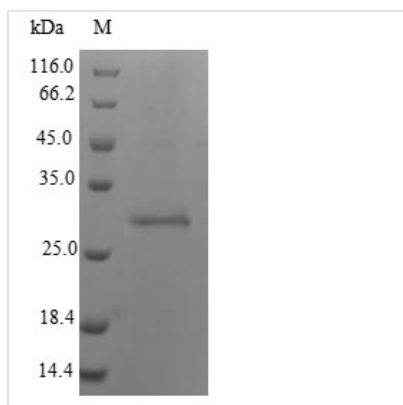




Recombinant Calloselasma rhodostoma Snaclec rhodocytin subunit beta

Product Code	CSB-EP872766CBG
Relevance	Elicits platelet aggregation by the binding to the C-type lectin domain family 1 member B (CLEC1B/CLEC2). Binding leads to tyrosine phosphorylation in the cytoplasmic tail of CLEC1B, which promotes the binding of spleen tyrosine kinase (Syk), subsequent activation of PLCgamma2, and platelet activation and aggregation. Binding to GPIbalpha (GP1BA) and alpha2/beta-1 (ITGA2/ITGB1) may also induce aggregation, but this is controversial.
Storage	The shelf life is related to many factors, storage state, buffer ingredients, storage temperature and the stability of the protein itself. Generally, the shelf life of liquid form is 6 months at -20°C/-80°C. The shelf life of lyophilized form is 12 months at -20°C/-80°C.
Uniprot No.	Q9I840
Alias	Aggretin beta chain Rhodoaggretin subunit beta
Product Type	Recombinant Protein
Immunogen Species	Calloselasma rhodostoma (Malayan pit viper) (Agkistrodon rhodostoma)
Purity	Greater than 90% as determined by SDS-PAGE.
Sequence	DCPSGWSSYEGHCYKPFNEPKNWADAERFCKLQPKHSHLVSFQSAEEADFV VKLTRPRLKANLVWMGLSNIWHGNCNWQWSDGARLNYKDWQEQSECLAFRG VHTEWLNMDCSSTCSFVCKFKA
Lead Time	Delivery time may differ from different purchasing way or location, please kindly consult your local distributors for specific delivery time.
Research Area	others
Source	E.coli
Protein Names	Recommended name: Rhodocytin subunit betaAlternative name(s): Aggretin beta chain
Expression Region	24-146aa
Notes	Repeated freezing and thawing is not recommended. Store working aliquots at 4°C for up to one week.
Tag Info	N-terminal 6xHis-B2M-tagged
Mol. Weight	28.4kDa
Protein Description	Full Length of Mature Protein
Image	



(Tris-Glycine gel) Discontinuous SDS-PAGE (reduced) with 5% enrichment gel and 15% separation gel.

Reconstitution

We recommend that this vial be briefly centrifuged prior to opening to bring the contents to the bottom. Please reconstitute protein in deionized sterile water to a concentration of 0.1-1.0 mg/mL. We recommend to add 5-50% of glycerol (final concentration) and aliquot for long-term storage at -20°C/-80°C. Our default final concentration of glycerol is 50%. Customers could use it as reference.