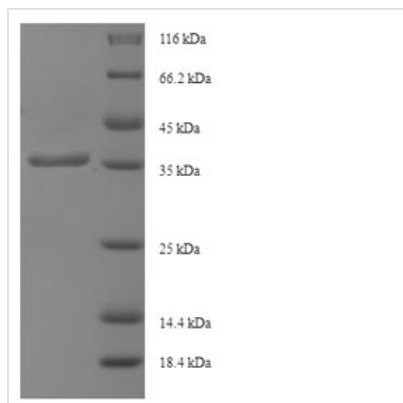




Recombinant Human Intraflagellar transport protein 27 homolog (IFT27)

Product Code	CSB-EP874822HU
Relevance	Small GTPase-like component of the intraflagellar transport (IFT) complex B that promotes the exit of the BBSome complex from cilia via its interaction with ARL6 . Not involved in entry of the BBSome complex into cilium. Prevents aggregation of GTP-free ARL6 . Required for hedgehog signaling. Forms a subcomplex within the IFT complex B with IFT25 .
Storage	The shelf life is related to many factors, storage state, buffer ingredients, storage temperature and the stability of the protein itself. Generally, the shelf life of liquid form is 6 months at -20°C/-80°C. The shelf life of lyophilized form is 12 months at -20°C/-80°C.
Uniprot No.	Q9BW83
Alias	Putative GTP-binding protein RAY-likeRab-like protein 4
Product Type	Recombinant Protein
Immunogen Species	Homo sapiens (Human)
Purity	Greater than 90% as determined by SDS-PAGE.
Sequence	MVKLAAKCILAGDPAVGKTALAQIFRSDGAHFQKSYTLTTGMDLVVKTPVVPD TGDSVELFIFDSAGKELFSEMLDKLWESPNVLCLVYDVTNEESFNCSKWLEK ARSQAPGISLPGVLVGNKTDLAGRRRAVDSAEARAWALGQGLECFETSVKEME NFEAPFHCLAKQFHQLYREKVEVFRALA
Lead Time	Delivery time may differ from different purchasing way or location, please kindly consult your local distributors for specific delivery time.
Research Area	Signal Transduction
Source	E.coli
Gene Names	IFT27
Expression Region	1-186aa
Notes	Repeated freezing and thawing is not recommended. Store working aliquots at 4°C for up to one week.
Tag Info	N-terminal 6xHis-SUMO-tagged
Mol. Weight	36.5kDa
Protein Description	Full Length
Image	



(Tris-Glycine gel) Discontinuous SDS-PAGE (reduced) with 5% enrichment gel and 15% separation gel.

Reconstitution

We recommend that this vial be briefly centrifuged prior to opening to bring the contents to the bottom. Please reconstitute protein in deionized sterile water to a concentration of 0.1-1.0 mg/mL. We recommend to add 5-50% of glycerol (final concentration) and aliquot for long-term storage at -20°C/-80°C. Our default final concentration of glycerol is 50%. Customers could use it as reference.