

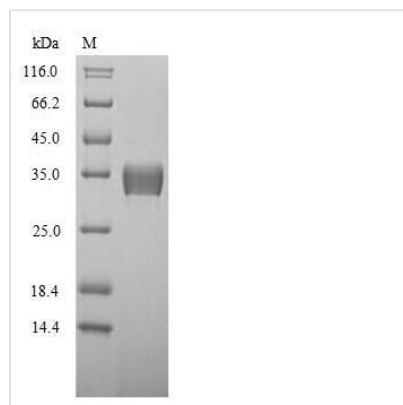


Recombinant Mouse 14-3-3 protein beta/alpha (Ywhab)

Product Code	CSB-EP875120MO
Relevance	Adapter protein implicated in the regulation of a large spectrum of both general and specialized signaling pathways. Binds to a large number of partners, usually by recognition of a phosphoserine or phosphothreonine motif. Binding generally results in the modulation of the activity of the binding partner. Negative regulator of osteogenesis. Blocks the nuclear translocation of the phosphorylated form (by AKT1) of SRPK2 and antagonizes its stimulatory effect on cyclin D1 expression resulting in blockage of neuronal apoptosis elicited by SRPK2. Negative regulator of signaling cascades that mediate activation of MAP kinases via AKAP13.
Abbreviation	Ywhab
Storage	The shelf life is related to many factors, storage state, buffer ingredients, storage temperature and the stability of the protein itself. Generally, the shelf life of liquid form is 6 months at -20°C/-80°C. The shelf life of lyophilized form is 12 months at -20°C/-80°C.
Uniprot No.	Q9CQV8
Product Type	Recombinant Protein
Immunogen Species	Mus musculus (Mouse)
Purity	Greater than 90% as determined by SDS-PAGE.
Sequence	MTMDKSELVQKAKLAEQAERYDDMAAAMKAVTEQGHLSNEERNLLSVAYK NVVGARRSSWRVISSIEQKTERNEKKQQMKEYREKIEAELQDICNDVLELLD KYLILNATQAESKV FYLKMKG DYFRYLSEVASGENKQTTVSNSQQAYQEAFEI SKKEMQPTHPIRLGLALNFSVFYIEILNSPEKACSLAKTAFDEAIAELDTLNEES YKDSTLIMQLLRDNLTLWTSENQGDEGDAGEGEN
Lead Time	3-7 business days
Research Area	Neuroscience
Source	E.coli
Gene Names	Ywhab
Protein Names	Protein kinase C inhibitor protein 1
Expression Region	1-246aa
Notes	Repeated freezing and thawing is not recommended. Store working aliquots at 4°C for up to one week.
Tag Info	N-terminal 10xHis-tagged
Mol. Weight	33.6 kDa
Protein Description	Full Length



Image



(Tris-Glycine gel) Discontinuous SDS-PAGE (reduced) with 5% enrichment gel and 15% separation gel.

Description

The expression region of this recombinant Mouse Ywhab covers amino acids 1-246. The calculated molecular weight for this Ywhab protein is 33.6 kDa. Expression of this Ywhab protein is conducted in e.coli. The N-terminal 10xHis tag was fused into the coding gene segment of Ywhab, making it easier to detect and purify the Ywhab recombinant protein in the later stages of expression and purification.

Mouse 14-3-3 protein beta/alpha (Ywhab) is a versatile regulator involved in diverse cellular processes. Ywhab interacts with phosphorylated target proteins, influencing their activity, localization, and stability. Its functions span signal transduction, cell cycle regulation, and apoptosis. Ywhab's versatility makes it a key player in maintaining cellular homeostasis and responding to environmental cues. The studies on Ywhab include intracellular signaling pathways, protein-protein interactions, and investigations into its impact on cellular functions. Understanding Ywhab's involvement in diverse processes contributes to insights into normal cellular physiology and provides potential avenues for therapeutic interventions in conditions where these processes are dysregulated.

Reconstitution

We recommend that this vial be briefly centrifuged prior to opening to bring the contents to the bottom. Please reconstitute protein in deionized sterile water to a concentration of 0.1-1.0 mg/mL. We recommend to add 5-50% of glycerol (final concentration) and aliquot for long-term storage at -20°C/-80°C. Our default final concentration of glycerol is 50%. Customers could use it as reference.