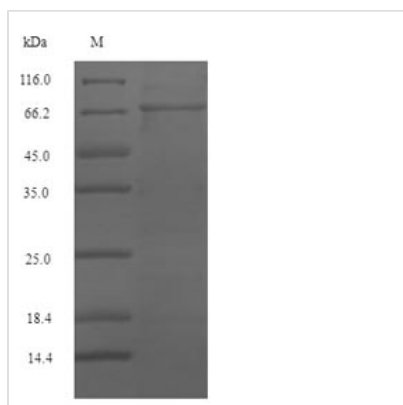




# Recombinant Mouse Serum response factor (Srf)

<b>Product Code</b>	CSB-EP881354MO
<b>Relevance</b>	SRF is a transcription factor that binds to the serum response element (SRE), a short sequence of dyad symmetry located 300 bp to the 5' of the site of transcription initiation of some genes (such as FOS) (By similarity). Required for cardiac differentiation and maturation.
<b>Storage</b>	The shelf life is related to many factors, storage state, buffer ingredients, storage temperature and the stability of the protein itself. Generally, the shelf life of liquid form is 6 months at -20°C/-80°C. The shelf life of lyophilized form is 12 months at -20°C/-80°C.
<b>Uniprot No.</b>	Q9JM73
<b>Alias</b>	Short name:SRF
<b>Product Type</b>	Recombinant Protein
<b>Immunogen Species</b>	Mus musculus (Mouse)
<b>Purity</b>	Greater than 90% as determined by SDS-PAGE.
<b>Sequence</b>	MLPSQAGAAAAALGRGSALGGNLNRTPTGRPGGGGGTRGANGGRVPGNGAG LGQSRLEREAATAAAPTAGALYSGSEGDSESGEEELGAERRGLKRSLS LGVVVGPEAAAAAAGGYGPVSGAVSGAKPGKKTRGRVKIKMEFIDNKLRRY TTFSKRKGTGIMKKAYELSTLTGTQVLLLVASETGHVYTFATRLQPMITSETGK ALIQTCLNSPDSPPRSDPTTDQRMSATGFEEPDLTYQVSESDSSGETKDTLKP AFTVTNLPGTTSTIQTAPSTSTTMQVSSGSPFITNYLAPVSASVSPSAVSSAN GTVLKSTGSGPVSSGGLMQLPTSFTLMPGGAVAQVQVQAIHVHQAPQQASP SRDSSTDLTQTSSSGTVTLPATIMTSSVPTTVGGHMMYPSPHAVMYAPTSGLA DGSLTVLNAFSQAPSTMQVSHSQVQEPGGVPQVFLTAPSGTVQIPVSAVQLH QMAVIGQQAGSSSNLTELQVVNLDATHSTKSE
<b>Lead Time</b>	Delivery time may differ from different purchasing way or location, please kindly consult your local distributors for specific delivery time.
<b>Research Area</b>	Cardiovascular
<b>Source</b>	E.coli
<b>Gene Names</b>	Srf
<b>Expression Region</b>	1-504aa
<b>Notes</b>	Repeated freezing and thawing is not recommended. Store working aliquots at 4°C for up to one week.
<b>Tag Info</b>	N-terminal 6xHis-SUMO-tagged
<b>Mol. Weight</b>	67.2kDa
<b>Protein Description</b>	Full Length
<b>Image</b>	



(Tris-Glycine gel) Discontinuous SDS-PAGE (reduced) with 5% enrichment gel and 15% separation gel.

## Reconstitution

We recommend that this vial be briefly centrifuged prior to opening to bring the contents to the bottom. Please reconstitute protein in deionized sterile water to a concentration of 0.1-1.0 mg/mL. We recommend to add 5-50% of glycerol (final concentration) and aliquot for long-term storage at -20°C/-80°C. Our default final concentration of glycerol is 50%. Customers could use it as reference.