



Recombinant Human Glutaminase liver isoform, mitochondrial (GLS2)

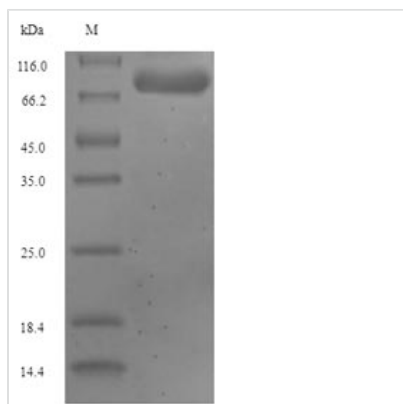
Product Code	CSB-EP887058HU
Relevance	Plays an important role in the regulation of glutamine catabolism. Promotes mitochondrial respiration and increases ATP generation in cells by catalyzing the synthesis of glutamate and alpha-ketoglutarate. Increases cellular anti-oxidant function via NADH and glutathione production. May play a role in preventing tumor proliferation.
Storage	The shelf life is related to many factors, storage state, buffer ingredients, storage temperature and the stability of the protein itself. Generally, the shelf life of liquid form is 6 months at -20°C/-80°C. The shelf life of lyophilized form is 12 months at -20°C/-80°C.
Uniprot No.	Q9UI32
Alias	L-glutaminase L-glutamine amidohydrolase
Product Type	Recombinant Protein
Immunogen Species	Homo sapiens (Human)
Purity	Greater than 90% as determined by SDS-PAGE.
Sequence	<p> GSHCGRGGWGHPSRSPLLGGGVRHHLSEAAAQGRETPHSHQPQHQQDHDSS ESGMLSRLGDLLFYTIAEGQERIPHKFTTALKATGLQTSDPRLRDCMSEMRV VQESSSGGLLDRDLFRKCVSSNIVLLTQAFRKKFVIPDFEFTGHVDRIFEDVK ELTGGKVAAYIPQLAKSNPDLWGVSLCTVDGQRHSGVHTKIPFCLQSCVKPLT YAISISTLGTDYVHKFVGKEPSGLRYNKLNLNEEGIPHNPMVNAIVVSSLIK DCNKAKEKDFVLQYLNKMAGNEYMGFSNATFQSEKETGDRNYAIGYYLKEKK CFPKGVDMMAALDLYFQLCSVEVTCESGSVMAATLANGGICPITGESVLSAEA VRNTLSLMHSCGMDFSGQFAFHVGLPAKSAVSGAILLVVPNVMMGMMCLSP LDKLGNSHRGTSFCQKLVSLEFNHNYDNLRHCARKLDPREGAEIRNKTVVNL LFAAYSGDVSALRRFALSAMDMEQKDYDSRTALHVAAGHIEVVKFLIEACK VNPFAKDRWGNIPLDLDAVQFNHLEVVKLLQDYQDSYTLSETQAEAAAALSKE NLESMV </p>
Lead Time	Delivery time may differ from different purchasing way or location, please kindly consult your local distributors for specific delivery time.
Research Area	Metabolism
Source	E.coli
Gene Names	GLS2
Expression Region	15-602aa
Notes	Repeated freezing and thawing is not recommended. Store working aliquots at 4°C for up to one week.
Tag Info	N-terminal 6xHis-SUMO-tagged


Mol. Weight

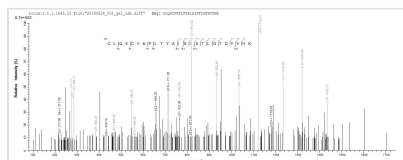
80.7kDa

Protein Description

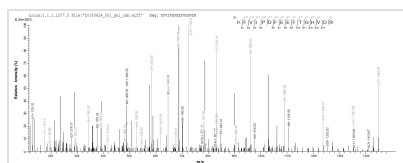
Full Length of Mature Protein

Image


(Tris-Glycine gel) Discontinuous SDS-PAGE (reduced) with 5% enrichment gel and 15% separation gel.



Based on the SEQUEST from database of E.coli host and target protein, the LC-MS/MS Analysis result of CSB-EP887058HU could indicate that this peptide derived from E.coli-expressed Homo sapiens (Human) GLS2.



Based on the SEQUEST from database of E.coli host and target protein, the LC-MS/MS Analysis result of CSB-EP887058HU could indicate that this peptide derived from E.coli-expressed Homo sapiens (Human) GLS2.

Reconstitution

We recommend that this vial be briefly centrifuged prior to opening to bring the contents to the bottom. Please reconstitute protein in deionized sterile water to a concentration of 0.1-1.0 mg/mL. We recommend to add 5-50% of glycerol (final concentration) and aliquot for long-term storage at -20°C/-80°C. Our default final concentration of glycerol is 50%. Customers could use it as reference.