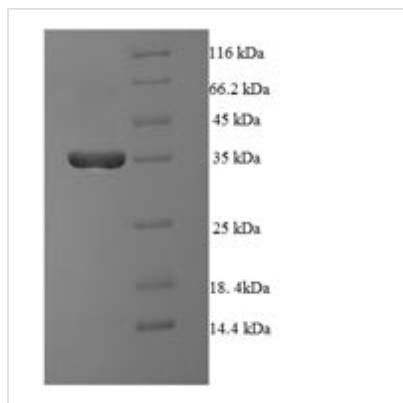




Recombinant Human Serine/threonine-protein phosphatase 2A regulatory subunit B' subunit beta (PPP2R3B)

Product Code	CSB-EP896533HU
Relevance	The B regulatory subunit might modulate substrate selectivity and catalytic activity, and also might direct the localization of the catalytic enzyme to a particular subcellular compartment.
Storage	The shelf life is related to many factors, storage state, buffer ingredients, storage temperature and the stability of the protein itself. Generally, the shelf life of liquid form is 6 months at -20°C/-80°C. The shelf life of lyophilized form is 12 months at -20°C/-80°C.
Uniprot No.	Q9Y5P8
Alias	PP2A subunit B isoform PR48Protein phosphatase 2A 48 kDa regulatory subunit
Product Type	Recombinant Protein
Immunogen Species	Homo sapiens (Human)
Purity	Greater than 90% as determined by SDS-PAGE.
Sequence	MDLDGDGALSMFELEYFYEEQCRRLDSMAIEALPFQDCLCQMLDLVKPRTEG KITLQDLKRCKLANVFFDTFFNIEKYLDHEQKEQISLLRDGDSGGPELSDWEKY AAEEYDILVAEETAGEPWEDGFEAELSPVEQKLSALRSPLAQRPFPEAPSPLG AVDLYEYACGDEDELEPL
Lead Time	Delivery time may differ from different purchasing way or location, please kindly consult your local distributors for specific delivery time.
Research Area	Signal Transduction
Source	E.coli
Gene Names	PPP2R3B
Expression Region	1-176aa
Notes	Repeated freezing and thawing is not recommended. Store working aliquots at 4°C for up to one week.
Tag Info	N-terminal 6xHis-SUMO-tagged
Mol. Weight	36.1kDa
Protein Description	Full Length of Isoform 2
Image	



(Tris-Glycine gel) Discontinuous SDS-PAGE (reduced) with 5% enrichment gel and 15% separation gel.

Reconstitution

We recommend that this vial be briefly centrifuged prior to opening to bring the contents to the bottom. Please reconstitute protein in deionized sterile water to a concentration of 0.1-1.0 mg/mL. We recommend to add 5-50% of glycerol (final concentration) and aliquot for long-term storage at -20°C/-80°C. Our default final concentration of glycerol is 50%. Customers could use it as reference.