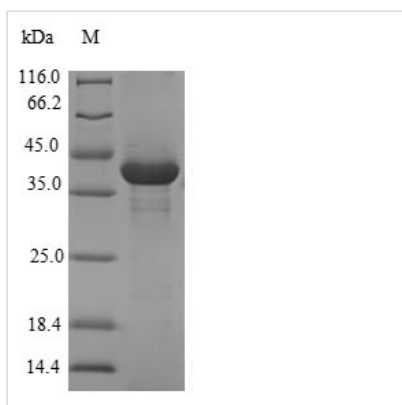




Recombinant Human Protein chibby homolog 1 (CBY1)

Product Code	CSB-EP896889HU
Relevance	Inhibits the Wnt/Wingless pathway by binding to CTNNB1/beta-catenin and inhibiting beta-catenin-mediated transcriptional activation through competition with TCF/LEF transcription factors. Has also been shown to play a role in regulating the intracellular trafficking of polycystin-2/PKD2 and possibly of other intracellular proteins. Promotes adipocyte and cardiomyocyte differentiation.
Abbreviation	CBY1
Storage	The shelf life is related to many factors, storage state, buffer ingredients, storage temperature and the stability of the protein itself. Generally, the shelf life of liquid form is 6 months at -20°C/-80°C. The shelf life of lyophilized form is 12 months at -20°C/-80°C.
Uniprot No.	Q9Y3M2
Alias	ARPP-binding protein Cytosolic leucine-rich protein PIGEA-14 PKD2 interactor, Golgi and endoplasmic reticulum-associated 1
Product Type	Recombinant Protein
Immunogen Species	Homo sapiens (Human)
Purity	Greater than 90% as determined by SDS-PAGE.
Sequence	MPFFGNTFSPKKTPPRKSASLSNLHSLDRSTREVELGLEYGSPMTMNLAGQSLK FENGQWIAETGVSGGVDRREVQRLRRRNQQLEENLLRLKVDILLDMLSES TAESHLMEKELDELISRKRK
Lead Time	Delivery time may differ from different purchasing way or location, please kindly consult your local distributors for specific delivery time.
Research Area	Signal Transduction
Source	E.coli
Gene Names	CBY1
Protein Names	Recommended name: Protein chibby homolog 1 Alternative name(s): ARPP-binding protein Cytosolic leucine-rich protein PIGEA-14 PKD2 interactor, Golgi and endoplasmic reticulum-associated 1
Expression Region	1-126aa
Notes	Repeated freezing and thawing is not recommended. Store working aliquots at 4°C for up to one week.
Tag Info	N-terminal GST-tagged
Mol. Weight	41.5kDa
Protein Description	Full Length
Image	



(Tris-Glycine gel) Discontinuous SDS-PAGE (reduced) with 5% enrichment gel and 15% separation gel.

Reconstitution

We recommend that this vial be briefly centrifuged prior to opening to bring the contents to the bottom. Please reconstitute protein in deionized sterile water to a concentration of 0.1-1.0 mg/mL. We recommend to add 5-50% of glycerol (final concentration) and aliquot for long-term storage at -20°C/-80°C. Our default final concentration of glycerol is 50%. Customers could use it as reference.