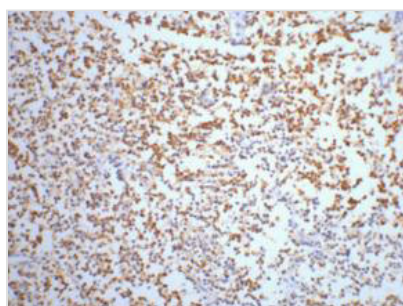




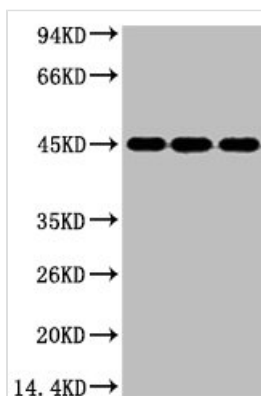
ENO2 Monoclonal Antibody

Product Code	CSB-MA000224
Storage	Upon receipt, store at -20°C or -80°C. Avoid repeated freeze.
Uniprot No.	P09104
Immunogen	Synthetic Peptide
Raised In	Mouse
Species Reactivity	Human,Mouse,Rat
Tested Applications	ELISA,WB,IHC;Recommended dilution:WB:1:500-1:5000,IHC:1:50-1:500
Form	Liquid
Conjugate	Non-conjugated
Storage Buffer	PBS, pH 7.4, containing 0.02% sodium azide as Preservative and 50% Glycerol.
Isotype	IgG
Alias	ENO2; Gamma-enolase; 2-phospho-D-glycerate hydro-lyase; Enolase 2; Neural enolase; Neuron-specific enolase; NSE
Product Type	Monoclonal Antibody
Immunogen Species	Homo sapiens (Human)
Gene Names	ENO2

Image



IHC staining of Human small cell carcinoma of lung tissue, diluted at 1:200.



Western blot analysis of 1) HeLa, 2) Jurkat, 3) 293T cell lysates, diluted at 1:3000.