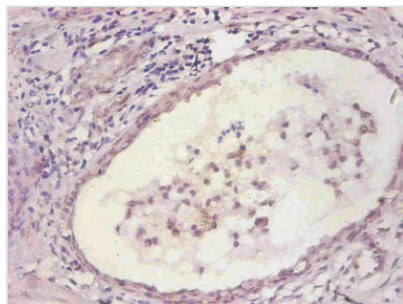




# IL6 Monoclonal Antibody

<b>Product Code</b>	CSB-MA067571A0m
<b>Storage</b>	Upon receipt, store at -20°C or -80°C. Avoid repeated freeze.
<b>Immunogen</b>	Recombinant Human Interleukin-6
<b>Raised In</b>	mouse
<b>Species Reactivity</b>	Human
<b>Specificity</b>	specific for human Interleukin-6 denatured and native forms
<b>Tested Applications</b>	ELISA, IHC; Recommended dilution: IHC:1:50-1:500
<b>Relevance</b>	Cytokine with a wide variety of biological functions. It is a potent inducer of the acute phase response. Plays an essential role in the final differentiation of B-cells into Ig-secreting cells Involved in lymphocyte and monocyte differentiation. It induces myeloma and plasmacytoma growth and induces nerve cells differentiation Acts on B-cells, T-cells, hepatocytes, hematopoietic progenitor cells and cells of the CNS. Also acts as a myokine. It is discharged into the bloodstream after muscle contraction and acts to increase the breakdown of fats and to improve insulin resistance.
<b>Form</b>	liquid
<b>Conjugate</b>	Non-conjugated
<b>Storage Buffer</b>	Preservative: 0.03% Proclin 300Constituents: 50% Glycerol, 0.01M PBS, PH 7.4
<b>Purification Method</b>	>95% by Protein G purified
<b>Isotype</b>	IgG1
<b>Clonality</b>	monoclonal
<b>Alias</b>	B-cell stimulatory factor 2,BSF-2,CTL differentiation factor,CDF,Hybridoma growth factor,Interferon beta-2,IFN-beta-2
<b>Product Type</b>	Monoclonal Antibody
<b>Immunogen Species</b>	Homo sapiens (Human)
<b>Clone No.</b>	6D4H9

## Image



Immunohistochemical of paraffin-embedded human prostate tissue using CSB-MA067571A0m at dilution of 1:200