



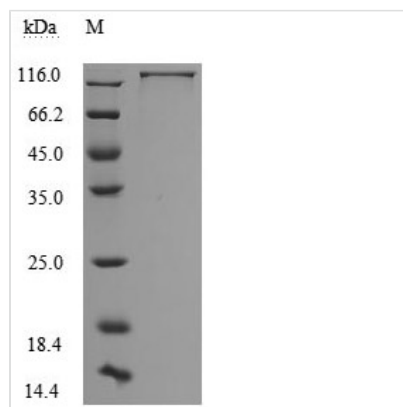
Recombinant Human Neural cell adhesion molecule L1 (L1CAM), partial (Active)

Product Code	CSB-MP012704HU1
Storage	The shelf life is related to many factors, storage state, buffer ingredients, storage temperature and the stability of the protein itself. Generally, the shelf life of liquid form is 6 months at -20°C/-80°C. The shelf life of lyophilized form is 12 months at -20°C/-80°C.
Uniprot No.	P32004
Form	Lyophilized powder
Storage Buffer	Lyophilized from a 0.2 µm filtered 20 mM Tris-HCl, 0.5 M NaCl, 6% Trehalose, pH 8.0
Product Type	Recombinant Protein
Immunogen Species	Homo sapiens (Human)
Biological Activity	Measured by its binding ability in a functional ELISA. Immobilized L1CAM at 2 µg/ml can bind Anti-L1CAM Rabbit Monoclonal Antibody (CSB-RA595071A0HU), the EC ₅₀ is 5.384-9.380 ng/ml.
Purity	Greater than 95% as determined by SDS-PAGE.
Sequence	<p>IQIPEEYEGHHVMEPPVITEQSPRRLVVFPTDDISLKCEASGKPEVQFRWTRD GVHFKPKEELGVTVYQSPHSGSFTITGNNSNFAQRFQGIYRCFASNKLGTAMS HEIRLMAEGAPKWPKETVKPVEVEEGESVVLPCNPPPSAEPLRIYWMNSKILHI KQDERVTMGQNGNLYFANVLTSDNHSDYICHAHFPGTRTIIQKEPIDLRVKATN SMIDRKPRLLFPTNSSSHLVALQGQPLVLECIAEGFPTPTIKWLRPSGPMPADR VTYQNHNKTLQLLKVGEEDDGEYRCLAENSLGSARHAYYVTVEAAPYWLHKP QSHLYGPGETARLDCQVQGRPQPEVTWRINGIPVEELAKDQKYRIQRGALILS NVQPSDTMTVQCEARNRHGLLLANAYIYVVLPAKILTADNQTYMAVQGSTAY LLCKAFGAPVPSVQWLDEDGTTVLQDERFFPYANGTLGIRDLQANDTGRYFCL AANDQNNVTIMANLKVKDQITQGPRSTIEKKGSRVTFTCQASFDPSLQPSIT WRGDGRDLQELGDSKYFIEDGRLVIHSLDYSDQGNYSVASTELDVVESRA QLLVVGSPGPVPRVLSDLHLLTQSQVRVSWSPAEDHNAPIEKYDIEFEDKEM APEKWYSLGKVPGNQTSTTLKLSPLYVHYTFRVTAINKYGPGEPSPVSETVVTP EAAPEKNPVDVKGEGNETTNMVTWKPLRWMDWNAPQVQYRVQWRPQGTR GPWQEQIVSDPFLVVSNTSTFVPYEIKVQAVNSQKGPEPQVTIGYSGEDYPQ AIPELEGIEILNSSAVLVKWRPVDLAQVKGHLRGYNVTYWREGSQRKHSKRHI HKDHVVVPANTTSVILSGLRPYSSYHLEVQAFNGRSGPASEFTTSTPEGVPG HPEALHLECQSNTSLLLRLWQPPLSHNGVLTGYVLSYHPLDEGGKGQLSFNLR DPELRTHNLTDLSPLRLYRFQLQATTKEGPGEAIVREGGTMALSGISDFGNISA TAGENYSVVSWSVPKEGQCNFRFHILFKALGEEKGGASLSPQYVSYNQSSYTQ WDLQPDTDYEIHLFKERMFRHQMVAVKTNGTGRVRLPPAGFATE</p>
Lead Time	3-7 business days
Source	Mammalian cell

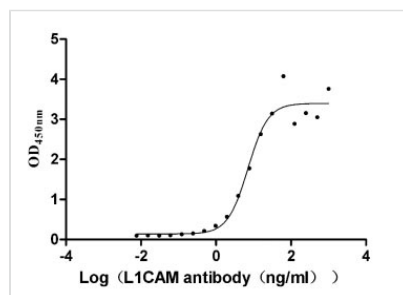


Gene Names	L1CAM
Expression Region	20-1120aa
Notes	Repeated freezing and thawing is not recommended. Store working aliquots at 4°C for up to one week.
Tag Info	N-terminal 10xHis-tagged and C-terminal Myc-tagged
Mol. Weight	128.2 kDa
Protein Description	Partial

Image



(Tris-Glycine gel) Discontinuous SDS-PAGE (reduced) with 5% enrichment gel and 15% separation gel.



Activity
Measured by its binding ability in a functional ELISA. Immobilized L1CAM at 2 µg/ml can bind Anti-L1CAM Rabbit Monoclonal Antibody (CSB-RA595071A0HU), the EC₅₀ is 5.384-9.380 ng/ml.

Description

Human neural cell adhesion molecule L1 (L1CAM) amino acids 20-1120 carrying an N-terminal 10xHis-tag and a C-terminal Myc-tag were expressed in mammalian cells. The product is the recombinant human L1CAM protein. This L1CAM protein is characterized by high purity (>95%, SDS-PAGE) and low endotoxin (1.0 EU/ug protein, LAL method). It is an active protein. Its activity was determined via a functional ELISA by binding to the anti-L1CAM rabbit monoclonal antibody, with EC₅₀ values of 5.384-9.380 ng/ mL. It is available now.

L1CAM mainly functions during neural development, including the regulation of neurite outgrowth, fasciculation, cell adhesion, cell migration, myelination, and cell survival. It is also involved in cancer development and is related to metastases and poor prognosis.

Endotoxin	Less than 1.0 EU/ug as determined by LAL method.
Reconstitution	We recommend that this vial be briefly centrifuged prior to opening to bring the



contents to the bottom. Please reconstitute protein in deionized sterile water to a concentration of 0.1-1.0 mg/mL. We recommend to add 5-50% of glycerol (final concentration) and aliquot for long-term storage at -20°C/-80°C. Our default final concentration of glycerol is 50%. Customers could use it as reference.