



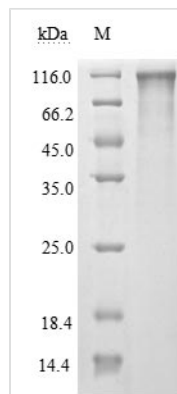
# Recombinant Severe acute respiratory syndrome coronavirus 2 Spike glycoprotein (S), partial (Active)

<b>Product Code</b>	CSB-MP3324GMY
<b>Storage</b>	The shelf life is related to many factors, storage state, buffer ingredients, storage temperature and the stability of the protein itself. Generally, the shelf life of liquid form is 6 months at -20°C/-80°C. The shelf life of lyophilized form is 12 months at -20°C/-80°C.
<b>Uniprot No.</b>	P0DTC2
<b>Form</b>	Lyophilized powder
<b>Storage Buffer</b>	Lyophilized from a 0.2 µm sterile filtered 20 mM Tris-HCl, 0.5 M NaCl, 6% Trehalose, pH 8.0
<b>Product Type</b>	Recombinant Protein
<b>Immunogen Species</b>	Severe acute respiratory syndrome coronavirus 2 (2019-nCoV) (SARS-CoV-2)
<b>Biological Activity</b>	①Measured by its binding ability in a functional ELISA. Immobilized SARS-CoV-2-S at 2 µg/ml can bind human ACE2 (CSB-MP866317HU), the EC <sub>50</sub> of SARS-CoV-2-S protein is 56.64 - 103.6 ng/ml.②Measured by its binding ability in a functional ELISA. Immobilized SARS-CoV-2-S at 2 µg/ml can bind SARS-CoV-2-S Antibody (CSB-RA33245A1GMY), the EC <sub>50</sub> of SARS-CoV-2-S protein is 36.79-48.87 ng/ml
<b>Purity</b>	Greater than 90% as determined by SDS-PAGE.
<b>Sequence</b>	VNLTTRTQLPPAYTNSFTRGVYYPDKVFRSSVLHSTQDLFLPFFSNVTWFWHAIH VSGTNGTKRFDNPVLPFNDGVYFASTEKSNIIIRGWIFGTTLDSTQSLIVNNA TNVVIKVCEFCNDPFLGVYYHKNNKSWMESEFRVYSSANNCTFEYVSQPF LMDLEGKQGNFKNLREFVFKNIDGYFKIYSKHTPINLVRDLPQGFSALEPLVDL PIGINITRFQTLALHRSYLTPGDSSSGWTAGAAAYVGYLQPRTFLLKYNENG TITDAVDCALDPLSETKCTLSFTVEKGIYQTSNFRVQPTEIVRFPNITNLCPF GEVFNATRFASVYAWNRKRISNCVADYSVLYNSASFSTFKCYGVSPSTKLNDLC FTNVYADSFVIRGDEVQRQIAPGQTGKIADYNYKLPDDFTGCVIAWNSNNLDSK VGGNYNYLYRLFRKSNLKPFERDISTEIQAGSTPCNGVEGFNCYFPLQSYGF QPTNGVGYQPYRVVLSFELLHAPATVCGPKKSTNLVKNKCVNFNFNGLTGT GVLTESNKKFLPFQFGRDIADTTDAVRDPQTLEILDITPCSFGGVSVITPGTNT SNQVAVLYQDVNCTEVPVAIHADQLTPTWRVYSTGSNVFQTRAGCLIGAEHV NNSYECDIPIGAGICASYQTQTNSPRRAR
<b>Lead Time</b>	3-7 business days
<b>Research Area</b>	Microbiology
<b>Source</b>	Mammalian cell
<b>Gene Names</b>	S

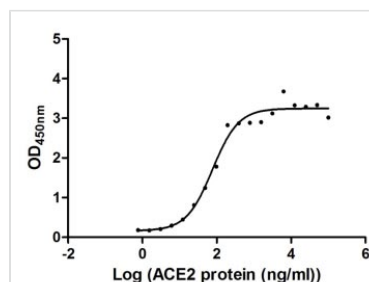


<b>Expression Region</b>	16-685aa
<b>Notes</b>	Repeated freezing and thawing is not recommended. Store working aliquots at 4°C for up to one week.
<b>Tag Info</b>	N-terminal 10xHis-tagged and C-terminal Flag-tagged
<b>Mol. Weight</b>	79.6 kDa
<b>Protein Description</b>	Partial

## Image

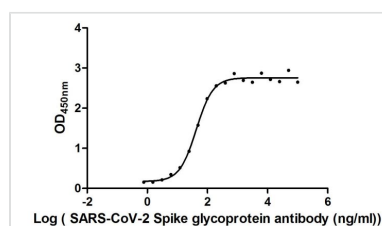


(Tris-Glycine gel) Discontinuous SDS-PAGE (reduced) with 5% enrichment gel and 15% separation gel.



### Activity

Measured by its binding ability in a functional ELISA. Immobilized SARS-CoV-2-S at 2 µg/ml can bind human ACE2 (CSB-MP866317HU), the EC<sub>50</sub> of SARS-CoV-2-S protein is 56.64 - 103.6 ng/ml.



### Activity

Measured by its binding ability in a functional ELISA. Immobilized SARS-CoV-2-S at 2 µg/ml can bind SARS-CoV-2-S Antibody (CSB-RA33245A1GMY), the EC<sub>50</sub> of SARS-CoV-2-S protein is 36.79-48.87 ng/ml

<b>Endotoxin</b>	Less than 1.0 EU/ug as determined by LAL method.
<b>Reconstitution</b>	We recommend that this vial be briefly centrifuged prior to opening to bring the contents to the bottom. Please reconstitute protein in deionized sterile water to a concentration of 0.1-1.0 mg/mL. We recommend to add 5-50% of glycerol (final concentration) and aliquot for long-term storage at -20°C/-80°C. Our default final concentration of glycerol is 50%. Customers could use it as reference.