



Recombinant Human Angiotensin-converting enzyme 2 (ACE2), partial, Biotinylated (Active)

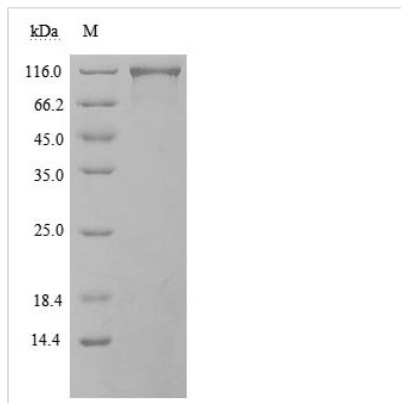
Product Code	CSB-MP866317HU-B
Storage	The shelf life is related to many factors, storage state, buffer ingredients, storage temperature and the stability of the protein itself. Generally, the shelf life of liquid form is 6 months at -20°C/-80°C. The shelf life of lyophilized form is 12 months at -20°C/-80°C.
Uniprot No.	Q9BYF1
Form	Lyophilized powder
Storage Buffer	Lyophilized from a 0.2 µm sterile filtered PBS, 6% Trehalose, pH 7.4.
Product Type	Recombinant Protein
Immunogen Species	Homo sapiens (Human)
Biological Activity	①Measured by its binding ability in a functional ELISA. Immobilized SARS-CoV-2-S1-RBD(CSB-MP3324GMY1b1) at 2 µg/ml can bind Biotinylated human ACE2, the EC ₅₀ is 4.599-8.322 ng/ml.
Purity	Greater than 85% as determined by SDS-PAGE.
Sequence	QSTIEEQAKTFLDKFNHEAEDLFYQSSLASWNYNTNITEENVQNMNNAGDKW SAFLKEQSTLAQMYPLQEIQNLTVKLQLQALQQNGSSVLSEDKSKRLNTILNTM STIYSTGKVCNPDNPQECLLLEPGLNEIMANSLDYNERLWAWESWRSEVGKQ LRPLYEEYVVLKNEMARANHYEDYGDYWRGDYEVNGVDGYDYSRGQLIEDV EHTFEEIKPLYEHLHAYVRAKLMNAYPSYISPIGCLPAHLLGDMWGRFWTNLY SLTVPGGQKPNIDVTDAMVDQAWDAQRIKFAEKFFVSVGLPNMTQGFWENS MLTDPGNVQKAVCHPTAWDLGKGDFRILMCTKVTMDDFLTAHHEMGHIQYD MAYAAQPFLLRNGANEGFHEAVGEIMSLSAATPKHLKSIGLLSPDFQEDNETEI NFLKQALITVGTLPFTYMLEKWRWMVFKGEIPKDQWMKKWWEMKREIVGVV EPVPHDETYCDPASLFHVSNDYSFIRYYTRTLYQFQFQEALCQAAKHGEP LHK CDISNSTEAGQKLFNMLRLGKSEPWTALENVVGAKNMNVRPLLNYFEPLFT WLKDQNKNSFVGWSTDWSPYADQSIKVRISLKSALGDKAYEWNDNEMYLFR SSVAYAMRQYFLKVKNQMILFGEEDVRVANLKPRI SFNFFVTAPKNVSDIIPRT EVEKAIRMSRSRINDAFRLNDNSLEFLGIQPTLGPPNQPPVS
Lead Time	3-7 business days
Research Area	Cell Biology
Source	Mammalian cell
Gene Names	ACE2
Expression Region	18-740aa
Notes	Repeated freezing and thawing is not recommended. Store working aliquots at 4°C for up to one week.
Tag Info	C-terminal mFc-Avi-tagged



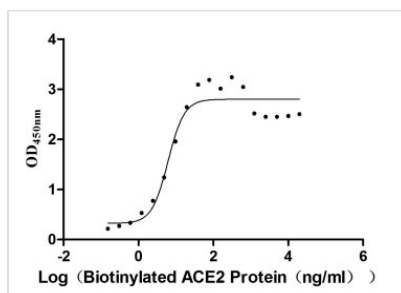
Mol. Weight 112.6 kDa

Protein Description Partial

Image



(Tris-Glycine gel) Discontinuous SDS-PAGE (reduced) with 5% enrichment gel and 15% separation gel.



Activity
Measured by its binding ability in a functional ELISA. Immobilized SARS-CoV-2-S1-RBD(CSB-MP3324GMY1b1) at 2 µg/ml can bind Biotinylated human ACE2, the EC₅₀ is 4.599-8.322 ng/ml.

Description

Human ACE2? amino acid (Gly16 - Gly216) was expressed in mammalian cells and then was fused with mFc-Avi at the C-terminus. The resulting protein is the mFc-Avi-tagged recombinant ACE2 protein. Its purity is greater than 85% determined by SDS-PAGE. This recombinant ACE2 protein is biotinylated through Avitag technology and thus can specifically and stably bind avidin/streptavidin, which confers itself to high detection sensitivity. So this ACE2 protein is especially suitable for ELISA and WB assays. ACE2 is an important player in the renin-angiotensin-aldosterone system (RAAS) pathway that is key to modulate blood pressure, wound healing, and inflammation. It has recently been proven to be a functional receptor for the SARS-CoV-2 S protein. ACE2-SARS-CoV-2 S interaction is essential for the SARS-CoV-2 infection.

Endotoxin Less than 1.0 EU/ug as determined by LAL method.

Reconstitution We recommend that this vial be briefly centrifuged prior to opening to bring the contents to the bottom. Please reconstitute protein in deionized sterile water to a concentration of 0.1-1.0 mg/mL. We recommend to add 5-50% of glycerol (final concentration) and aliquot for long-term storage at -20°C/-80°C. Our default final concentration of glycerol is 50%. Customers could use it as reference.