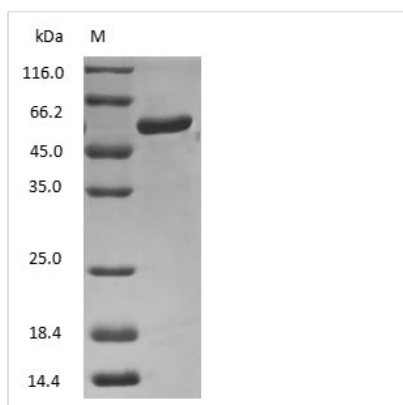




# Human Prealbumin protein

<b>Product Code</b>	CSB-NP003401h
<b>Relevance</b>	Thyroid hormone-binding protein. Probably transports thyroxine from the bloodstream to the brain. Detected in serum and cerebrospinal fluid (at protein level). Highly expressed in choroid plexus epithelial cells. Detected in retina pigment epithelium and liver.
<b>Storage</b>	Aliquot and store at -20°C or -80°C. Avoid repeated freeze/thaw cycles.
<b>Tested Applications</b>	ELISA, WB, SDS-PAGE
<b>Form</b>	Liquid
<b>Storage Buffer</b>	PBS, pH 7.4
<b>Alias</b>	Transthyretin, ATTR, TBPA
<b>Product Type</b>	Native Protein
<b>Sensitivity</b>	Not test
<b>Purity</b>	>95% (SDS-PAGE)
<b>Sequence</b>	Full length protein
<b>Lead Time</b>	2 weeks
<b>Research Area</b>	Cardiovascular/Stem Cells Lineage/Cancer
<b>Source</b>	Purified from Human serum
<b>Protein Names</b>	Human Prealbumin protein

## Image



(Tris-Glycine gel) Discontinuous SDS-PAGE (reduced) with 5% enrichment gel and 15% separation gel.