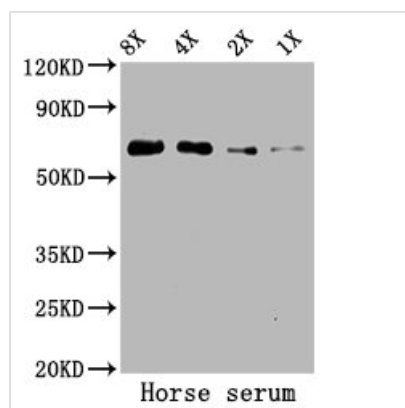




# ALB Antibody

<b>Product Code</b>	CSB-PA00040E1Rb
<b>Storage</b>	Upon receipt, store at -20°C or -80°C. Avoid repeated freeze.
<b>Uniprot No.</b>	P35747
<b>Immunogen</b>	Serum Albumin purified from Horse serum (Native Protein)
<b>Raised In</b>	Rabbit
<b>Species Reactivity</b>	Horse
<b>Tested Applications</b>	ELISA, WB; Recommended dilution: WB:1:500-1:5000
<b>Form</b>	Liquid
<b>Conjugate</b>	Non-conjugated
<b>Storage Buffer</b>	Preservative: 0.03% Proclin 300 Constituents: 50% Glycerol, 0.01M PBS, PH 7.4
<b>Purification Method</b>	>95%, Protein G purified
<b>Isotype</b>	IgG
<b>Clonality</b>	Polyclonal
<b>Alias</b>	Serum albumin (allergen Equ c 3), ALB
<b>Immunogen Species</b>	Horse
<b>Research Area</b>	Cardiovascular
<b>Target Names</b>	ALB

## Image



### Western Blot

Positive WB detected in: Horse serum

All lanes: ALB antibody at 5.2µg/ml

Secondary

Goat polyclonal to rabbit IgG at 1/50000 dilution

Predicted band size: 69 kDa

Observed band size: 69 kDa