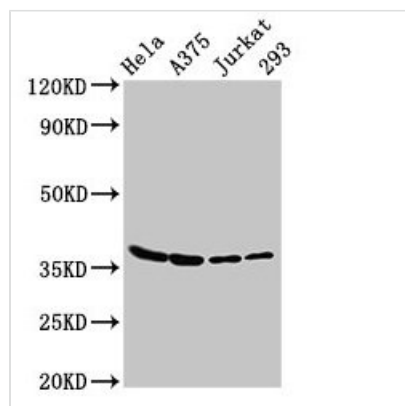




LDHA Antibody

Product Code	CSB-PA00045A0Rb
Storage	Upon receipt, store at -20°C or -80°C. Avoid repeated freeze.
Uniprot No.	P00338
Immunogen	Recombinant Human L-lactate dehydrogenase A chain protein (5-323AA)
Raised In	Rabbit
Species Reactivity	Human
Tested Applications	ELISA, WB, IHC, IF; Recommended dilution: WB:1:1000-1:5000, IHC:1:20-1:200, IF:1:50-1:200
Form	Liquid
Conjugate	Non-conjugated
Storage Buffer	Preservative: 0.03% Proclin 300 Constituents: 50% Glycerol, 0.01M PBS, PH 7.4
Purification Method	>95%, Protein G purified
Isotype	IgG
Clonality	Polyclonal
Alias	L-lactate dehydrogenase A chain (LDH-A) (EC 1.1.1.27) (Cell proliferation-inducing gene 19 protein) (LDH muscle subunit) (LDH-M) (Renal carcinoma antigen NY-REN-59), LDHA
Immunogen Species	Homo sapiens (Human)
Research Area	Signal Transduction
Target Names	LDHA

Image



Western Blot

Positive WB detected in: HeLa whole cell lysate, A375 whole cell lysate, Jurkat whole cell lysate, 293 whole cell lysate

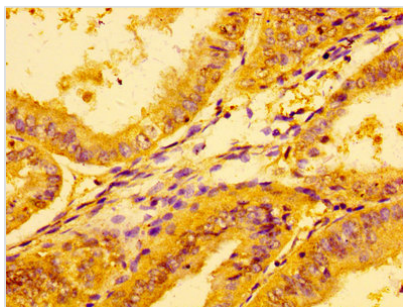
All lanes: LDHA antibody at 3µg/ml

Secondary

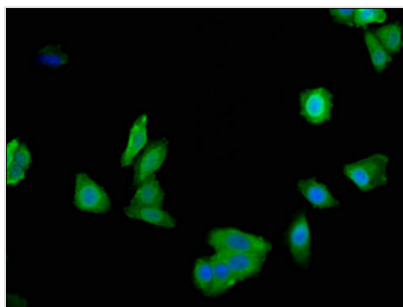
Goat polyclonal to rabbit IgG at 1/50000 dilution

Predicted band size: 37, 31, 40, 27 kDa

Observed band size: 37 kDa



Immunohistochemistry of paraffin-embedded human endometrial cancer using CSB-PA00045A0Rb at dilution of 1:100



Immunofluorescent analysis of HepG2 cells using CSB-PA00045A0Rb at dilution of 1:100 and Alexa Fluor 488-conjugated AffiniPure Goat Anti-Rabbit IgG(H+L)