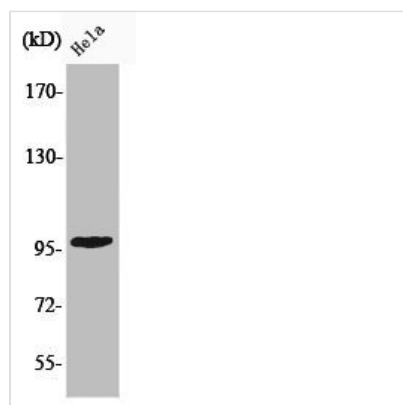




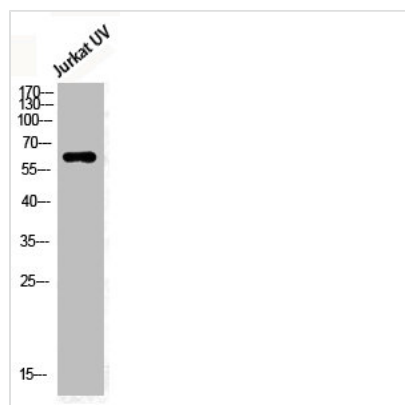
Phospho-CHEK2 (T68) Antibody

Product Code	CSB-PA000500
Storage	Upon receipt, store at -20°C or -80°C. Avoid repeated freeze.
Uniprot No.	O96017
Immunogen	Synthesized peptide derived from Human Chk2 around the phosphorylation site of T68.
Raised In	Rabbit
Species Reactivity	Human,Mouse,Rat
Tested Applications	WB, IHC, ELISA; WB:1:500-1:2000, IHC:1:100-1:300, ELISA:1:20000
Form	Liquid
Conjugate	Non-conjugated
Storage Buffer	Liquid in PBS containing 50% glycerol, 0.5% BSA and 0.02% sodium azide.
Purification Method	The antibody was affinity-purified from rabbit antiserum by affinity-chromatography using epitope-specific immunogen.
Isotype	IgG
Alias	CHEK2; CDS1; CHK2; RAD53; Serine/threonine-protein kinase Chk2; CHK2 checkpoint homolog; Cds1 homolog; Hucds1; hCds1; Checkpoint kinase 2
Immunogen Species	Homo sapiens (Human)
Target Names	CHEK2

Image



Western Blot analysis of HELA cells using Phospho-Chk2 (T68) Polyclonal Antibody



Western Blot analysis of Jurkat-UV cells using Phospho-Chk2 (T68) Polyclonal Antibody