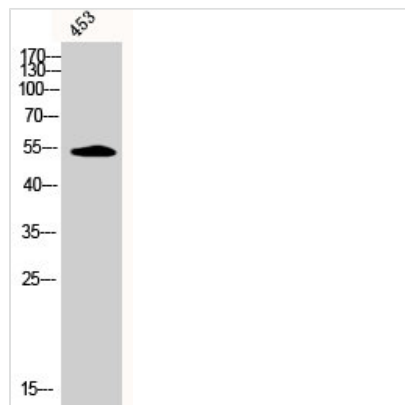




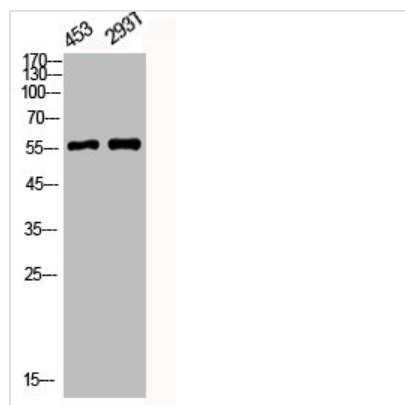
Phospho-CAMK2A/CAMK2B/CAMK2D (T305) Antibody

Product Code	CSB-PA000631
Storage	Upon receipt, store at -20°C or -80°C. Avoid repeated freeze.
Uniprot No.	Q9UQM7/Q13554/Q13557
Immunogen	Synthesized peptide derived from Human CaMKII α / β / δ around the phosphorylation site of T305.
Raised In	Rabbit
Species Reactivity	Human,Mouse,Rat
Tested Applications	WB, IHC, ELISA; WB:1:500-1:2000, IHC:1:100-1:300, ELISA:1:5000
Form	Liquid
Conjugate	Non-conjugated
Storage Buffer	Liquid in PBS containing 50% glycerol, 0.5% BSA and 0.02% sodium azide.
Purification Method	The antibody was affinity-purified from rabbit antiserum by affinity-chromatography using epitope-specific immunogen.
Isotype	IgG
Alias	CAMK2A; CAMKA; KIAA0968; Calcium/calmodulin-dependent protein kinase type II subunit alpha; CaM kinase II subunit alpha; CaMK-II subunit alpha; CAMK2B; CAM2; CAMK2; CAMKB; Calcium/calmodulin-dependent protein kinase type II subunit beta; Ca
Immunogen Species	Homo sapiens (Human)
Target Names	CAMK2A/CAMK2B/CAMK2D

Image



Western Blot analysis of 453 cells using Phospho-CaMKII α / β / δ (T305) Polyclonal Antibody



Western Blot analysis of 453 293T cells using
Phospho-CaMKII $\alpha/\beta/\delta$ (T305) Polyclonal
Antibody