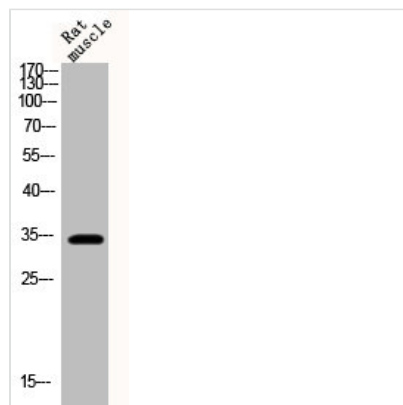




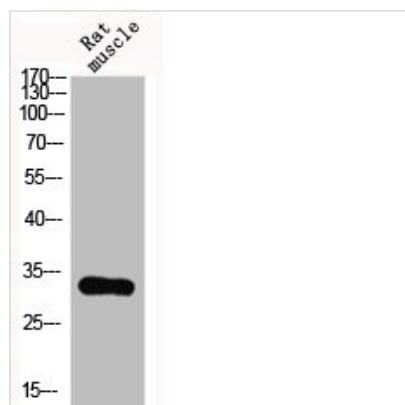
# Phospho-CCND1 (T286) Antibody

|                            |   |
|----------------------------|---|
| <b>Product Code</b>        | CSB-PA000642  |
| <b>Storage</b>             | Upon receipt, store at -20°C or -80°C. Avoid repeated freeze.   |
| <b>Uniprot No.</b>         | P24385  |
| <b>Immunogen</b>           | Synthesized peptide derived from Human Cyclin D1 around the phosphorylation site of T286.                             |
| <b>Raised In</b>           | Rabbit  |
| <b>Species Reactivity</b>  | Human,Mouse,Rat   |
| <b>Tested Applications</b> | WB, IHC, ELISA; WB:1:500-1:2000, IHC:1:100-1:300, ELISA:1:10000   |
| <b>Form</b>                | Liquid  |
| <b>Conjugate</b>           | Non-conjugated  |
| <b>Storage Buffer</b>      | Liquid in PBS containing 50% glycerol, 0.5% BSA and 0.02% sodium azide.   |
| <b>Purification Method</b> | The antibody was affinity-purified from rabbit antiserum by affinity-chromatography using epitope-specific immunogen. |
| <b>Isotype</b>             | IgG   |
| <b>Alias</b>               | CCND1; BCL1; PRAD1; G1/S-specific cyclin-D1; B-cell lymphoma 1 protein; BCL-1; BCL-1 oncogene; PRAD1 oncogene         |
| <b>Immunogen Species</b>   | Homo sapiens (Human)  |
| <b>Target Names</b>        | CCND1   |

## Image



Western Blot analysis of rat-muscle cells using Phospho-Cyclin D1 (T286) Polyclonal Antibody



Western Blot analysis of RAT-MUSCLE cells using Phospho-Cyclin D1 (T286) Polyclonal Antibody