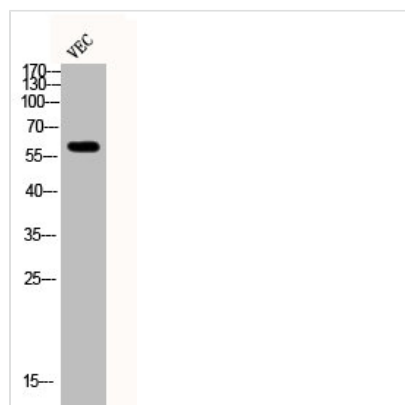




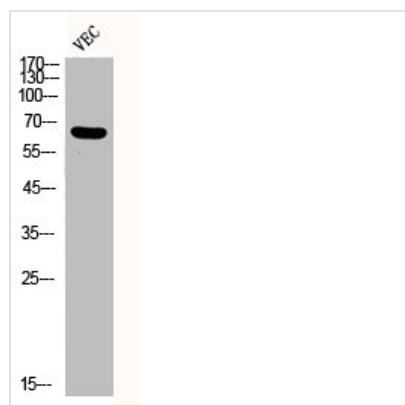
Phospho-SMAD2/SMAD3 (T8) Antibody

Product Code	CSB-PA000650
Storage	Upon receipt, store at -20°C or -80°C. Avoid repeated freeze.
Uniprot No.	Q15796/P84022
Immunogen	Synthesized peptide derived from Human Smad2/3 around the phosphorylation site of T8.
Raised In	Rabbit
Species Reactivity	Human,Mouse,Rat
Tested Applications	WB, ELISA; WB:1:500-1:2000, ELISA:1:10000
Form	Liquid
Conjugate	Non-conjugated
Storage Buffer	Liquid in PBS containing 50% glycerol, 0.5% BSA and 0.02% sodium azide.
Purification Method	The antibody was affinity-purified from rabbit antiserum by affinity-chromatography using epitope-specific immunogen.
Isotype	IgG
Alias	SMAD2; MADH2; MADR2; Mothers against decapentaplegic homolog 2; MAD homolog 2; Mothers against DPP homolog 2; JV18-1; Mad-related protein 2; hMAD-2; SMAD family member 2; SMAD 2; Smad2; hSMAD2; SMAD3; MADH3; Mothers against decapentaplegic
Immunogen Species	Homo sapiens (Human)
Target Names	SMAD2/SMAD3

Image



Western Blot analysis of VEC cells using Phospho-Smad2/3 (T8) Polyclonal Antibody



Western Blot analysis of VEC cells using
Phospho-Smad2/3 (T8) Polyclonal Antibody