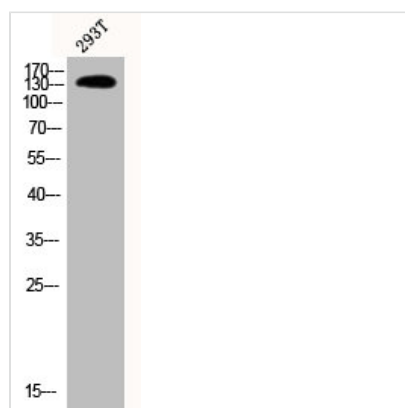




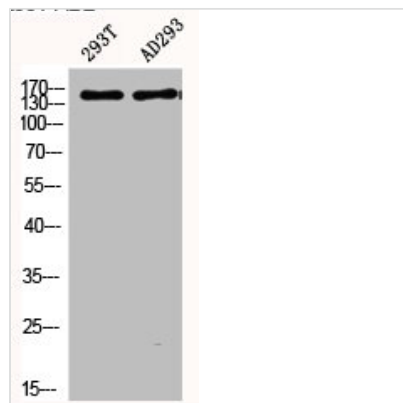
Phospho-PLCB3 (S537) Antibody

Product Code	CSB-PA000706
Storage	Upon receipt, store at -20°C or -80°C. Avoid repeated freeze.
Uniprot No.	Q01970
Immunogen	Synthesized peptide derived from Human PLC β 3 around the phosphorylation site of S537.
Raised In	Rabbit
Species Reactivity	Human, Mouse, Rat
Tested Applications	WB, IHC, ELISA; WB:1:500-1:2000, IHC:1:100-1:300, ELISA:1:10000
Form	Liquid
Conjugate	Non-conjugated
Storage Buffer	Liquid in PBS containing 50% glycerol, 0.5% BSA and 0.02% sodium azide.
Purification Method	The antibody was affinity-purified from rabbit antiserum by affinity-chromatography using epitope-specific immunogen.
Isotype	IgG
Alias	PLCB3; 1-phosphatidylinositol 4; 5-bisphosphate phosphodiesterase beta-3; Phosphoinositide phospholipase C-beta-3; Phospholipase C-beta-3; PLC-beta-3
Immunogen Species	Homo sapiens (Human)
Target Names	PLCB3

Image



Western Blot analysis of 293T cells using Phospho-PLC β 3 (S537) Polyclonal Antibody



Western Blot analysis of 293T AD293 cells using
Phospho-PLC β 3 (S537) Polyclonal Antibody