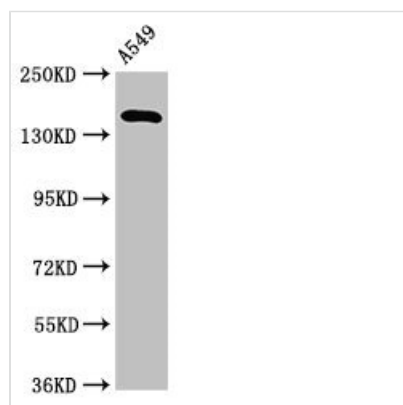




# A2ML1 Antibody

<b>Product Code</b>	CSB-PA001005LA01HU
<b>Storage</b>	Upon receipt, store at -20°C or -80°C. Avoid repeated freeze.
<b>Uniprot No.</b>	A8K2U0
<b>Immunogen</b>	Recombinant Human Alpha-2-macroglobulin-like protein 1 protein (625-751AA)
<b>Raised In</b>	Rabbit
<b>Species Reactivity</b>	Human
<b>Tested Applications</b>	ELISA, WB, IHC; Recommended dilution: WB:1:500-1:5000, IHC:1:20-1:200
<b>Form</b>	Liquid
<b>Conjugate</b>	Non-conjugated
<b>Storage Buffer</b>	Preservative: 0.03% Proclin 300 Constituents: 50% Glycerol, 0.01M PBS, pH 7.4
<b>Purification Method</b>	>95%, Protein G purified
<b>Isotype</b>	IgG
<b>Clonality</b>	Polyclonal
<b>Alias</b>	Alpha-2-macroglobulin-like protein 1 (C3 and PZP-like alpha-2-macroglobulin domain-containing protein 9), A2ML1, CPAMD9
<b>Immunogen Species</b>	Homo sapiens (Human)
<b>Research Area</b>	Immunology
<b>Target Names</b>	A2ML1

## Image



### Western Blot

Positive WB detected in: A549 whole cell lysate

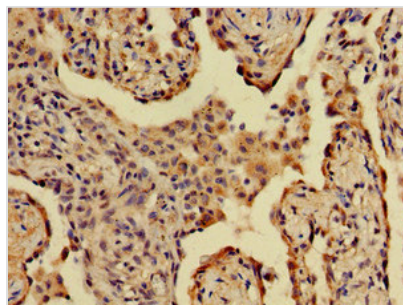
All lanes: A2ML1 antibody at 3.2µg/ml

Secondary

Goat polyclonal to rabbit IgG at 1/50000 dilution

Predicted band size: 162, 106 kDa

Observed band size: 162 kDa



Immunohistochemistry of paraffin-embedded human lung cancer using CSB-PA001005LA01HU at dilution of 1:100