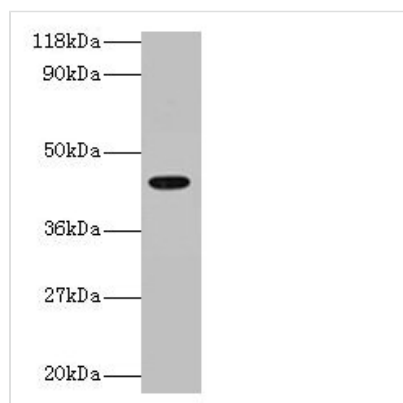




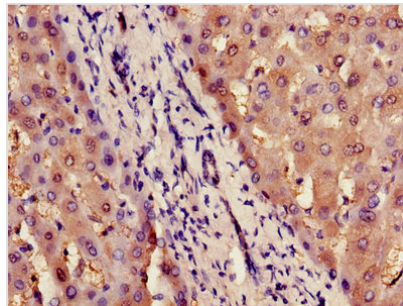
# ILF2 Antibody

<b>Product Code</b>	CSB-PA00114A0Rb
<b>Storage</b>	Upon receipt, store at -20°C or -80°C. Avoid repeated freeze.
<b>Uniprot No.</b>	Q12905
<b>Immunogen</b>	Recombinant Human Interleukin enhancer-binding factor 2 protein (1-390AA)
<b>Raised In</b>	Rabbit
<b>Species Reactivity</b>	Human
<b>Tested Applications</b>	ELISA, WB, IHC; Recommended dilution: WB:1:1000-1:5000, IHC:1:20-1:200
<b>Form</b>	Liquid
<b>Conjugate</b>	Non-conjugated
<b>Storage Buffer</b>	Preservative: 0.03% Proclin 300 Constituents: 50% Glycerol, 0.01M PBS, PH 7.4
<b>Purification Method</b>	>95%, Protein G purified
<b>Isotype</b>	IgG
<b>Clonality</b>	Polyclonal
<b>Alias</b>	Interleukin enhancer-binding factor 2 (Nuclear factor of activated T-cells 45 kDa), ILF2, NF45
<b>Immunogen Species</b>	Homo sapiens (Human)
<b>Research Area</b>	Epigenetics and Nuclear Signaling
<b>Target Names</b>	ILF2

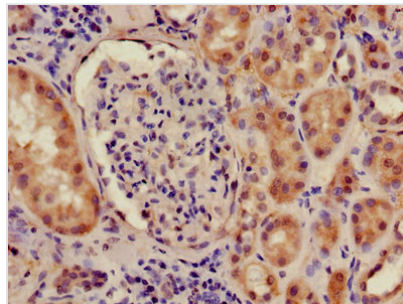
## Image



Western blot  
All lanes: ILF2 antibody at 2µg/ml + 293T whole cell lysate  
Secondary  
Goat polyclonal to rabbit IgG at 1/15000 dilution  
Predicted band size: 44 kDa  
Observed band size: 44 kDa



Immunohistochemistry of paraffin-embedded human liver tissue using CSB-PA00114A0Rb at dilution of 1:100



Immunohistochemistry of paraffin-embedded human kidney tissue using CSB-PA00114A0Rb at dilution of 1:100