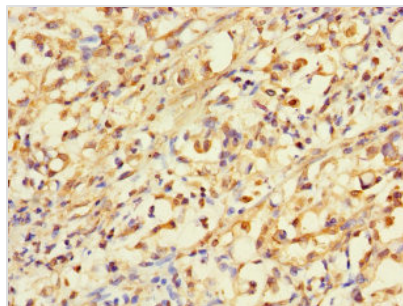




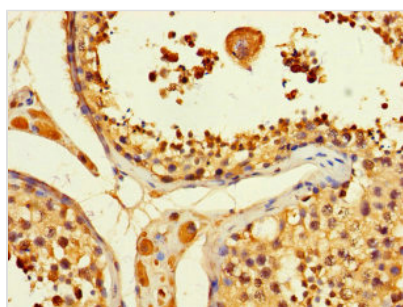
ACLY Antibody

Product Code	CSB-PA001158LA01HU
Storage	Upon receipt, store at -20°C or -80°C. Avoid repeated freeze.
Uniprot No.	P53396
Immunogen	Recombinant Human ATP-citrate synthase protein (4-265AA)
Raised In	Rabbit
Species Reactivity	Human
Tested Applications	ELISA, WB, IHC, IF; Recommended dilution: WB:1:500-1:5000, IHC:1:20-1:200, IF:1:50-1:200
Form	Liquid
Conjugate	Non-conjugated
Storage Buffer	Preservative: 0.03% Proclin 300 Constituents: 50% Glycerol, 0.01M PBS, PH 7.4
Purification Method	>95%, Protein G purified
Isotype	IgG
Clonality	Polyclonal
Alias	ATP-citrate synthase (EC 2.3.3.8) (ATP-citrate (pro-S-)-lyase) (ACL) (Citrate cleavage enzyme), ACLY
Immunogen Species	Homo sapiens (Human)
Research Area	Signal Transduction
Target Names	ACLY

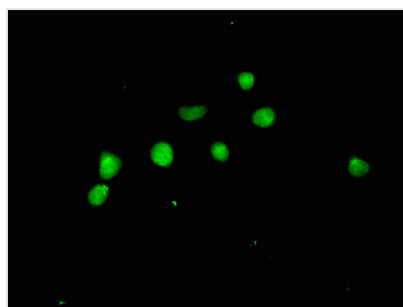
Image



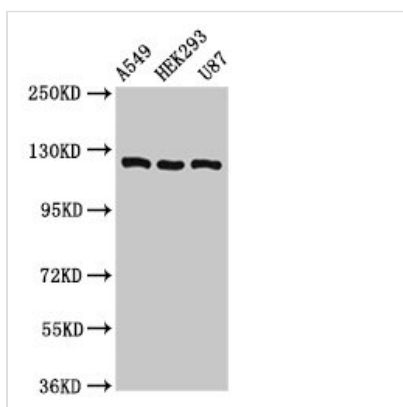
Immunohistochemistry of paraffin-embedded human gastric cancer using CSB-PA001158LA01HU at dilution of 1:100



Immunohistochemistry of paraffin-embedded human testis tissue using CSB-PA001158LA01HU at dilution of 1:100



Immunofluorescent analysis of HepG2 cells using CSB-PA001158LA01HU at dilution of 1:100 and Alexa Fluor 488-conjugated AffiniPure Goat Anti-Rabbit IgG(H+L)



Western Blot

Positive WB detected in: A549 whole cell lysate, HEK293 whole cell lysate, U87 whole cell lysate
All lanes: ACLY antibody at 8μg/ml

Secondary

Goat polyclonal to rabbit IgG at 1/50000 dilution

Predicted band size: 121, 120, 92 kDa

Observed band size: 121 kDa