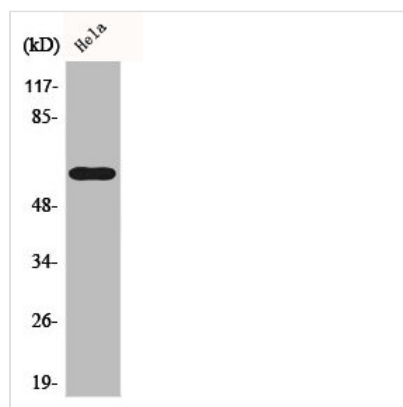




CDC6 Antibody

Product Code	CSB-PA001514
Storage	Upon receipt, store at -20°C or -80°C. Avoid repeated freeze.
Uniprot No.	Q99741
Immunogen	Synthesized peptide derived from Human Cdc6 around the non-phosphorylation site of S54.
Raised In	Rabbit
Species Reactivity	Human,Mouse
Tested Applications	WB, IHC, ELISA; WB:1:500-1:2000, IHC:1:100-1:300, ELISA:1:5000
Form	Liquid
Conjugate	Non-conjugated
Storage Buffer	Liquid in PBS containing 50% glycerol, 0.5% BSA and 0.02% sodium azide.
Purification Method	The antibody was affinity-purified from rabbit antiserum by affinity-chromatography using epitope-specific immunogen.
Isotype	IgG
Alias	CDC6; CDC18L; Cell division control protein 6 homolog; CDC6-related protein; Cdc18-related protein; HsCdc18; p62(cdc6); HsCDC6
Immunogen Species	Homo sapiens (Human)
Target Names	CDC6

Image



Western Blot analysis of HeLa cells using Cdc6 Polyclonal Antibody