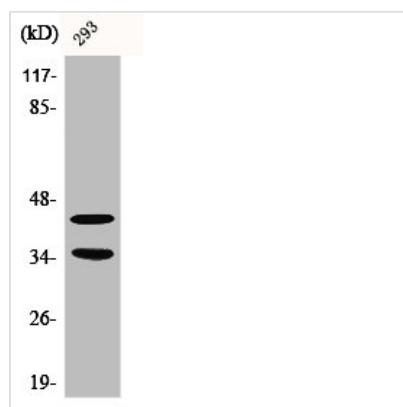




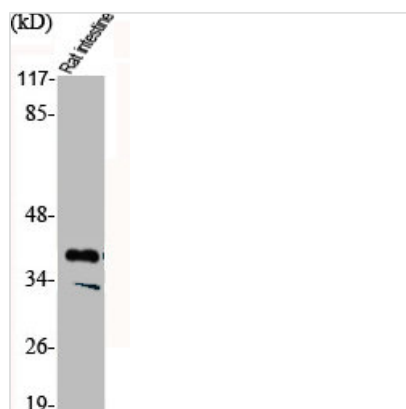
CDK10 Antibody

Product Code	CSB-PA001532
Storage	Upon receipt, store at -20°C or -80°C. Avoid repeated freeze.
Uniprot No.	Q15131
Immunogen	Synthesized peptide derived from the Internal region of Human Cdk10.
Raised In	Rabbit
Species Reactivity	Human,Mouse,Rat
Tested Applications	WB, IHC, ELISA; WB:1:500-1:2000, IHC:1:100-1:300, ELISA:1:10000
Form	Liquid
Conjugate	Non-conjugated
Storage Buffer	Liquid in PBS containing 50% glycerol, 0.5% BSA and 0.02% sodium azide.
Purification Method	The antibody was affinity-purified from rabbit antiserum by affinity-chromatography using epitope-specific immunogen.
Isotype	IgG
Alias	CDK10; Cyclin-dependent kinase 10; Cell division protein kinase 10; Serine/threonine-protein kinase PISSLRE
Immunogen Species	Homo sapiens (Human)
Target Names	CDK10

Image



Western Blot analysis of 293 cells using Cdk10 Polyclonal Antibody



Western Blot analysis of RAT-Intestine cells
using Cdk10 Polyclonal Antibody