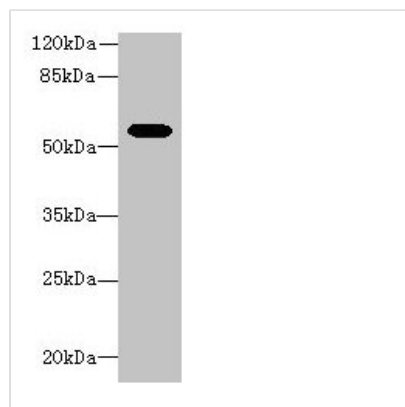




Aldh1a1 Antibody

Product Code	CSB-PA001565LA01MO
Storage	Upon receipt, store at -20°C or -80°C. Avoid repeated freeze.
Uniprot No.	P24549
Immunogen	Recombinant Mouse Retinal dehydrogenase 1 protein (2-501AA)
Raised In	Rabbit
Species Reactivity	Mouse
Tested Applications	ELISA, WB; Recommended dilution: WB:1:500-1:2000
Form	Liquid
Conjugate	Non-conjugated
Storage Buffer	Preservative: 0.03% Proclin 300 Constituents: 50% Glycerol, 0.01M PBS, PH 7.4
Purification Method	>95%, Protein G purified
Isotype	IgG
Clonality	Polyclonal
Alias	Retinal dehydrogenase 1 (RALDH 1) (RaLDH1) (EC 1.2.1.-) (EC 1.2.1.36) (ALDH-E1) (ALHDII) (Aldehyde dehydrogenase family 1 member A1) (Aldehyde dehydrogenase, cytosolic), Aldh1a1, Ahd-2 Ahd2 Aldh1
Immunogen Species	Mus musculus (Mouse)
Research Area	Neuroscience
Target Names	Aldh1a1

Image



Western blot

All lanes: Aldh1a1 antibody at 8µg/ml + Mouse eye tissue

Secondary

Goat polyclonal to rabbit IgG at 1/10000 dilution

Predicted band size: 55 kDa

Observed band size: 55 kDa