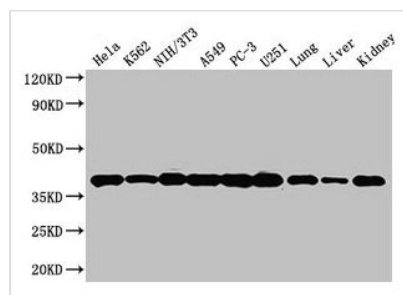




ANXA2 Antibody

Product Code	CSB-PA001840HA01HU
Storage	Upon receipt, store at -20°C or -80°C. Avoid repeated freeze.
Uniprot No.	P07355
Immunogen	Recombinant Human Annexin A2 protein (2-339AA)
Raised In	Rabbit
Species Reactivity	Human, Mouse
Tested Applications	ELISA, WB, IHC, IF, IP; Recommended dilution: WB:1:500-1:5000, IHC:1:20-1:200, IF:1:50-1:200, IP:1:200-1:2000
Form	Liquid
Conjugate	Non-conjugated
Storage Buffer	Preservative: 0.03% Proclin 300 Constituents: 50% Glycerol, 0.01M PBS, PH 7.4
Purification Method	>95%, Protein G purified
Isotype	IgG
Clonality	Polyclonal
Alias	Annexin A2 (Annexin II) (Annexin-2) (Calpactin I heavy chain) (Calpactin-1 heavy chain) (Chromobindin-8) (Lipocortin II) (Placental anticoagulant protein IV) (PAP-IV) (Protein I) (p36), ANXA2, ANX2 ANX2L4 CAL1H LPC2D
Immunogen Species	Homo sapiens (Human)
Research Area	Signal Transduction
Target Names	ANXA2

Image

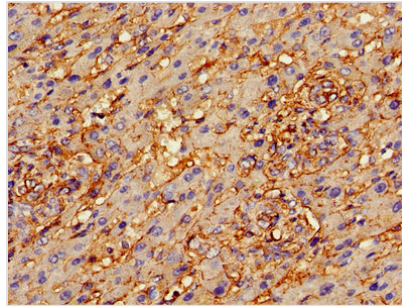


Western Blot

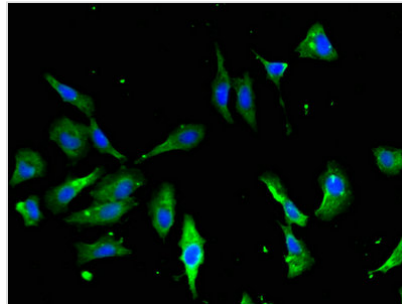
Positive WB detected in: Hela whole cell lysate, K562 whole cell lysate, NIH/3T3 whole cell lysate, A549 whole cell lysate, PC-3 whole cell lysate, U251 whole cell lysate, Mouse lung tissue, Mouse liver tissue, Mouse kidney tissue
All lanes: ANXA2 antibody at 3µg/ml

Secondary

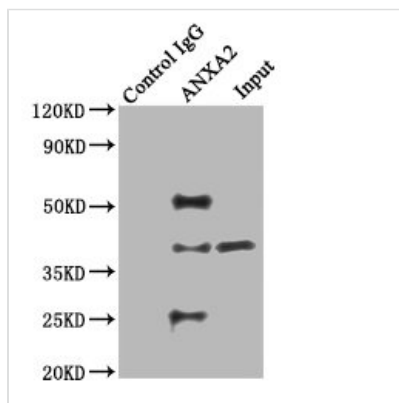
Goat polyclonal to rabbit IgG at 1/50000 dilution
Predicted band size: 39, 41 kDa
Observed band size: 39 kDa



Immunohistochemistry of paraffin-embedded human liver cancer using CSB-PA001840HA01HU at dilution of 1:100



Immunofluorescent analysis of HeLa cells using CSB-PA001840HA01HU at dilution of 1:100 and Alexa Fluor 488-conjugated AffiniPure Goat Anti-Rabbit IgG(H+L)

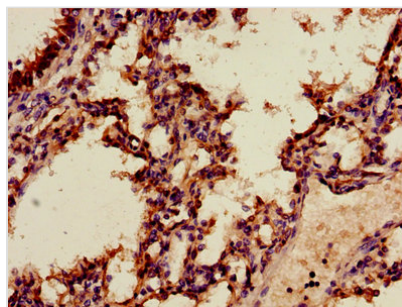


Immunoprecipitating ANXA2 in HeLa whole cell lysate

Lane 1: Rabbit control IgG instead of CSB-PA001840HA01HU in HeLa whole cell lysate. For western blotting, a HRP-conjugated Protein G antibody was used as the secondary antibody (1/2000)

Lane 2: CSB-PA001840HA01HU (8μg) + HeLa whole cell lysate (500μg)

Lane 3: HeLa whole cell lysate (20μg)



Immunohistochemistry of paraffin-embedded human lung tissue using CSB-PA001840HA01HU at dilution of 1:100