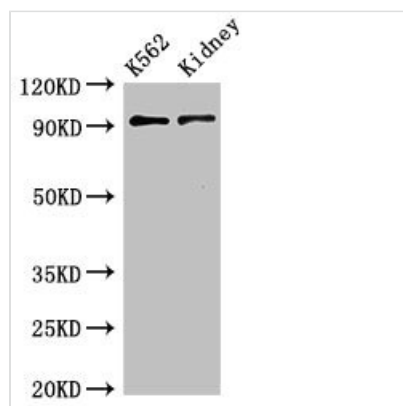




AP1G1 Antibody

Product Code	CSB-PA001861LA01HU
Storage	Upon receipt, store at -20°C or -80°C. Avoid repeated freeze.
Uniprot No.	O43747
Immunogen	Recombinant Human AP-1 complex subunit gamma-1 protein (592-686AA)
Raised In	Rabbit
Species Reactivity	Human, Mouse
Tested Applications	ELISA, WB, IHC, IF; Recommended dilution: WB:1:500-1:5000, IHC:1:20-1:200, IF:1:50-1:200
Form	Liquid
Conjugate	Non-conjugated
Storage Buffer	Preservative: 0.03% Proclin 300 Constituents: 50% Glycerol, 0.01M PBS, pH 7.4
Purification Method	>95%, Protein G purified
Isotype	IgG
Clonality	Polyclonal
Alias	AP-1 complex subunit gamma-1 (Adaptor protein complex AP-1 subunit gamma-1) (Adaptor-related protein complex 1 subunit gamma-1) (Clathrin assembly protein complex 1 gamma-1 large chain) (Gamma1-adaptin) (Golgi adaptor HA1/AP1 adaptin subunit gamma-1), AP1G1, ADTG CLAPG1
Immunogen Species	Homo sapiens (Human)
Research Area	Signal Transduction
Target Names	AP1G1

Image



Western Blot

Positive WB detected in:K562 whole cell lysate,Mouse kidney tissue

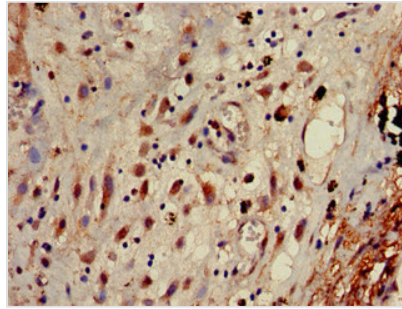
All lanes:AP1G1 antibody at 3.4µg/ml

Secondary

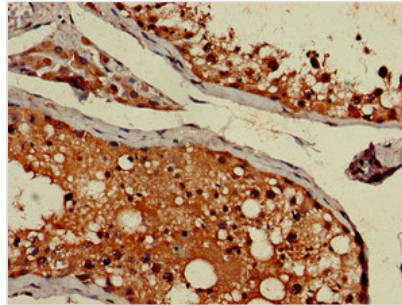
Goat polyclonal to rabbit IgG at 1/50000 dilution

Predicted band size: 92 KDa

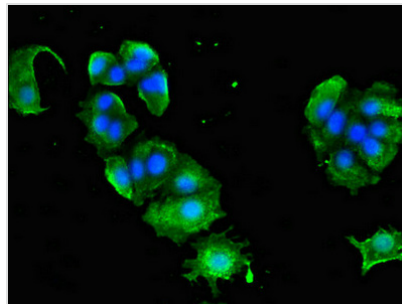
Observed band size: 92 KDa



Immunohistochemistry of paraffin-embedded human lung cancer using CSB-PA001861LA01HU at dilution of 1:100



Immunohistochemistry of paraffin-embedded human testis tissue using CSB-PA001861LA01HU at dilution of 1:100



Immunofluorescent analysis of MCF-7 cells using CSB-PA001861LA01HU at dilution of 1:100 and Alexa Fluor 488-conjugated AffiniPure Goat Anti-Rabbit IgG(H+L)