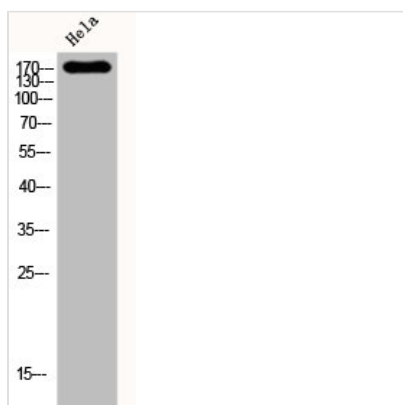




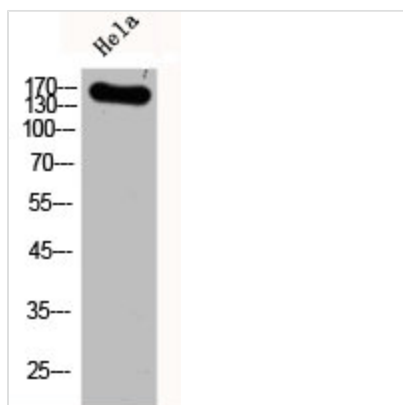
KDR Antibody

Product Code	CSB-PA002542
Storage	Upon receipt, store at -20°C or -80°C. Avoid repeated freeze.
Uniprot No.	P35968
Immunogen	Synthesized peptide derived from Human Flk-1 around the non-phosphorylation site of Y951.
Raised In	Rabbit
Species Reactivity	Human,Mouse
Tested Applications	WB, IHC, IF, ELISA; WB:1:500-1:2000, IHC:1:100-1:300, IF:1:200-1:1000, ELISA:1:20000
Form	Liquid
Conjugate	Non-conjugated
Storage Buffer	Liquid in PBS containing 50% glycerol, 0.5% BSA and 0.02% sodium azide.
Purification Method	The antibody was affinity-purified from rabbit antiserum by affinity-chromatography using epitope-specific immunogen.
Isotype	IgG
Alias	KDR; FLK1; VEGFR2; Vascular endothelial growth factor receptor 2; VEGFR-2; Fetal liver kinase 1; FLK-1; Kinase insert domain receptor; KDR; Protein-tyrosine kinase receptor flk-1; CD antigen CD309
Immunogen Species	Homo sapiens (Human)
Target Names	KDR

Image



Western Blot analysis of HeLa cells using Flk-1 Polyclonal Antibody



Western Blot analysis of HELA cells using Flk-1 Polyclonal Antibody