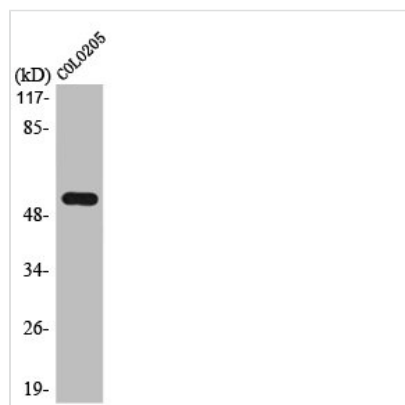




LIPI Antibody

Product Code	CSB-PA003162
Storage	Upon receipt, store at -20°C or -80°C. Avoid repeated freeze.
Uniprot No.	Q6XZB0
Immunogen	Synthesized peptide derived from the Internal region of Human LPD lipase.
Raised In	Rabbit
Species Reactivity	Human
Tested Applications	WB, IHC, ELISA; WB:1:500-1:2000, IHC:1:100-1:300, ELISA:1:10000
Form	Liquid
Conjugate	Non-conjugated
Storage Buffer	Liquid in PBS containing 50% glycerol, 0.5% BSA and 0.02% sodium azide.
Purification Method	The antibody was affinity-purified from rabbit antiserum by affinity-chromatography using epitope-specific immunogen.
Isotype	IgG
Alias	LIPI; LPDL; PRED5; Lipase member I; LIPI; Cancer/testis antigen 17; CT17; LPD lipase; Membrane-associated phosphatidic acid-selective phospholipase A1-beta; mPA-PLA1 beta
Immunogen Species	Homo sapiens (Human)
Target Names	LIPI

Image



Western Blot analysis of COLO205 cells using LPD lipase Polyclonal Antibody