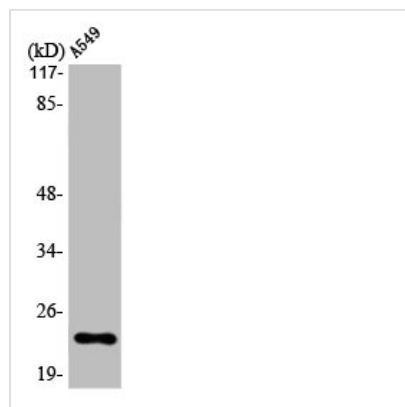




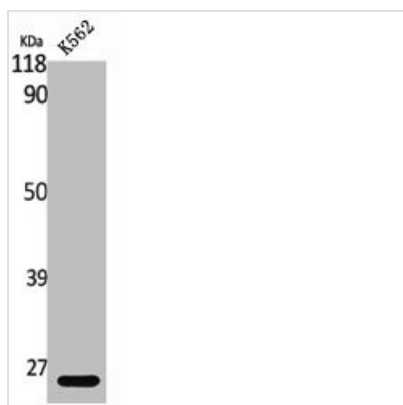
# MAD2L1 Antibody

|                            |                                                                                                                                         |
|----------------------------|-----------------------------------------------------------------------------------------------------------------------------------------|
| <b>Product Code</b>        | CSB-PA003184                                                                                                                            |
| <b>Storage</b>             | Upon receipt, store at -20°C or -80°C. Avoid repeated freeze.                                                                           |
| <b>Uniprot No.</b>         | Q13257                                                                                                                                  |
| <b>Immunogen</b>           | Synthesized peptide derived from the Internal region of Human MAD2.                                                                     |
| <b>Raised In</b>           | Rabbit                                                                                                                                  |
| <b>Species Reactivity</b>  | Human                                                                                                                                   |
| <b>Tested Applications</b> | WB, ELISA; WB:1:500-1:2000, ELISA:1:5000                                                                                                |
| <b>Form</b>                | Liquid                                                                                                                                  |
| <b>Conjugate</b>           | Non-conjugated                                                                                                                          |
| <b>Storage Buffer</b>      | Liquid in PBS containing 50% glycerol, 0.5% BSA and 0.02% sodium azide.                                                                 |
| <b>Purification Method</b> | The antibody was affinity-purified from rabbit antiserum by affinity-chromatography using epitope-specific immunogen.                   |
| <b>Isotype</b>             | IgG                                                                                                                                     |
| <b>Alias</b>               | MAD2L1; MAD2; Mitotic spindle assembly checkpoint protein MAD2A; HsMAD2; Mitotic arrest deficient 2-like protein 1; MAD2-like protein 1 |
| <b>Immunogen Species</b>   | Homo sapiens (Human)                                                                                                                    |
| <b>Target Names</b>        | MAD2L1                                                                                                                                  |

## Image



Western Blot analysis of A549 cells using MAD2 Polyclonal Antibody



Western Blot analysis of K562 cells using MAD2 Polyclonal Antibody