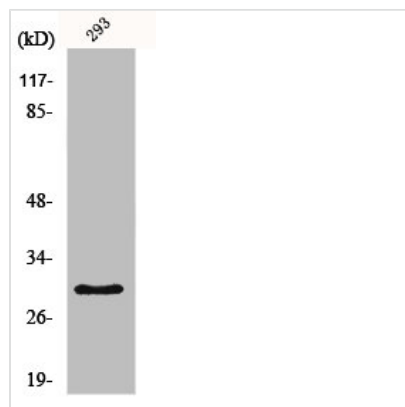




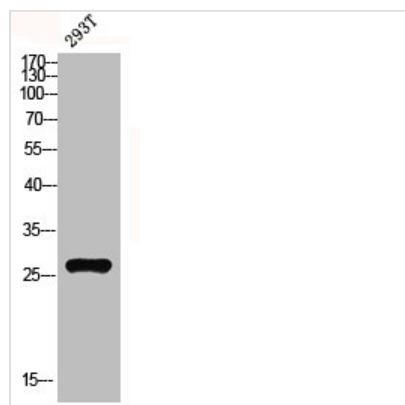
# MRPL10 Antibody

|                            |   |
|----------------------------|---|
| <b>Product Code</b>        | CSB-PA003283  |
| <b>Storage</b>             | Upon receipt, store at -20°C or -80°C. Avoid repeated freeze.   |
| <b>Uniprot No.</b>         | Q7Z7H8  |
| <b>Immunogen</b>           | Synthesized peptide derived from the C-terminal region of Human MRP-L10.  |
| <b>Raised In</b>           | Rabbit  |
| <b>Species Reactivity</b>  | Human   |
| <b>Tested Applications</b> | WB, IHC, ELISA; WB:1:500-1:2000, IHC:1:100-1:300, ELISA:1:20000   |
| <b>Form</b>                | Liquid  |
| <b>Conjugate</b>           | Non-conjugated  |
| <b>Storage Buffer</b>      | Liquid in PBS containing 50% glycerol, 0.5% BSA and 0.02% sodium azide.   |
| <b>Purification Method</b> | The antibody was affinity-purified from rabbit antiserum by affinity-chromatography using epitope-specific immunogen.                 |
| <b>Isotype</b>             | IgG   |
| <b>Alias</b>               | MRPL10; MRPL8; RPML8; 39S ribosomal protein L10; mitochondrial; L10mt; MRP-L10; 39S ribosomal protein L8, mitochondrial; L8mt; MRP-L8 |
| <b>Immunogen Species</b>   | Homo sapiens (Human)  |
| <b>Target Names</b>        | MRPL10  |

## Image



Western Blot analysis of COLO205 cells using MRP-L10 Polyclonal Antibody



Western blot analysis of 293T lysis using MRP-L10 antibody.