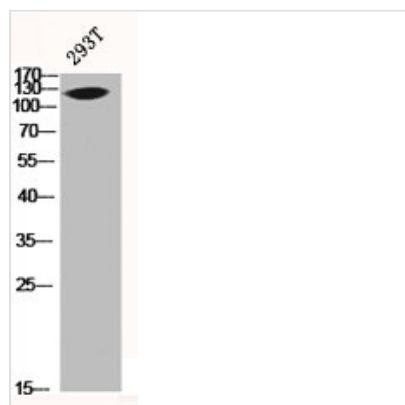




# MUC1 Antibody

|                            |  |
|----------------------------|--|
| <b>Product Code</b>        | CSB-PA003334   |
| <b>Storage</b>             | Upon receipt, store at -20°C or -80°C. Avoid repeated freeze.  |
| <b>Uniprot No.</b>         | P15941   |
| <b>Immunogen</b>           | Synthesized peptide derived from Human Mucin 1 around the non-phosphorylation site of Y1229.   |
| <b>Raised In</b>           | Rabbit   |
| <b>Species Reactivity</b>  | Human  |
| <b>Tested Applications</b> | WB, IHC, IF, ELISA; IHC:1:100-1:300, IF:1:200-1:1000, ELISA:1:10000  |
| <b>Form</b>                | Liquid   |
| <b>Conjugate</b>           | Non-conjugated   |
| <b>Storage Buffer</b>      | Liquid in PBS containing 50% glycerol, 0.5% BSA and 0.02% sodium azide.  |
| <b>Purification Method</b> | The antibody was affinity-purified from rabbit antiserum by affinity-chromatography using epitope-specific immunogen.  |
| <b>Isotype</b>             | IgG  |
| <b>Alias</b>               | MUC1; PUM; Mucin-1; MUC-1; Breast carcinoma-associated antigen DF3; Carcinoma-associated mucin; Episialin; H23AG; Krebs von den Lungen-6; KL-6; PEMT; Peanut-reactive urinary mucin; PUM; Polymorphic epithelial mucin; PEM; Tumor-associated ep |
| <b>Immunogen Species</b>   | Homo sapiens (Human)   |
| <b>Target Names</b>        | MUC1   |

## Image



Western Blot analysis of 293T cells using Mucin 1 Polyclonal Antibody