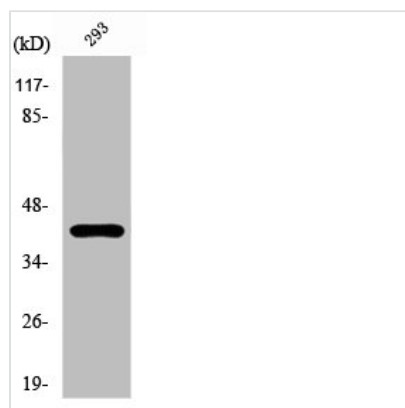




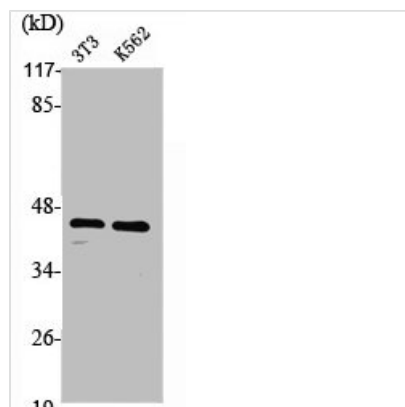
# PRKAR1A Antibody

|                            |  |
|----------------------------|--|
| <b>Product Code</b>        | CSB-PA003796   |
| <b>Storage</b>             | Upon receipt, store at -20°C or -80°C. Avoid repeated freeze.  |
| <b>Uniprot No.</b>         | P10644   |
| <b>Immunogen</b>           | Synthesized peptide derived from the C-terminal region of Human PKA I $\alpha$ reg.  |
| <b>Raised In</b>           | Rabbit   |
| <b>Species Reactivity</b>  | Human,Mouse,Rat  |
| <b>Tested Applications</b> | WB, IHC, IF, ELISA; WB:1:500-1:2000, IHC:1:100-1:300, IF:1:200-1:1000, ELISA:1:20000   |
| <b>Form</b>                | Liquid   |
| <b>Conjugate</b>           | Non-conjugated   |
| <b>Storage Buffer</b>      | Liquid in PBS containing 50% glycerol, 0.5% BSA and 0.02% sodium azide.  |
| <b>Purification Method</b> | The antibody was affinity-purified from rabbit antiserum by affinity-chromatography using epitope-specific immunogen.                |
| <b>Isotype</b>             | IgG  |
| <b>Alias</b>               | PRKAR1A; PKR1; PRKAR1; TSE1; cAMP-dependent protein kinase type I- $\alpha$ regulatory subunit; Tissue-specific extinguisher 1; TSE1 |
| <b>Immunogen Species</b>   | Homo sapiens (Human)   |
| <b>Target Names</b>        | PRKAR1A  |

## Image



Western Blot analysis of 293 cells using PKA I $\alpha$  reg Polyclonal Antibody



Western Blot analysis of NIH-3T3 K562 cells  
using PKA I $\alpha$  reg Polyclonal Antibody