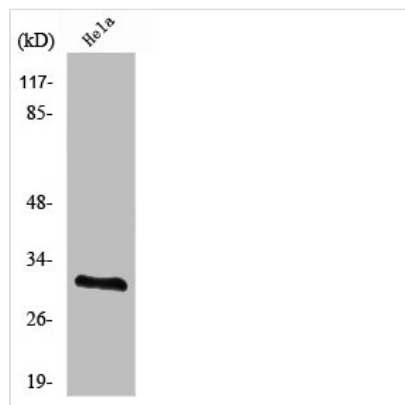




RPS2 Antibody

Product Code	CSB-PA003999
Storage	Upon receipt, store at -20°C or -80°C. Avoid repeated freeze.
Uniprot No.	P15880
Immunogen	Synthesized peptide derived from the C-terminal region of Human Ribosomal Protein S2.
Raised In	Rabbit
Species Reactivity	Human,Mouse,Rat
Tested Applications	WB, ELISA; WB:1:500-1:2000, ELISA:1:20000
Form	Liquid
Conjugate	Non-conjugated
Storage Buffer	Liquid in PBS containing 50% glycerol, 0.5% BSA and 0.02% sodium azide.
Purification Method	The antibody was affinity-purified from rabbit antiserum by affinity-chromatography using epitope-specific immunogen.
Isotype	IgG
Alias	RPS2; RPS4; 40S ribosomal protein S2; 40S ribosomal protein S4; Protein LLRep3
Immunogen Species	Homo sapiens (Human)
Target Names	RPS2

Image



Western Blot analysis of NIH-3T3 cells using Ribosomal Protein S2 Polyclonal Antibody