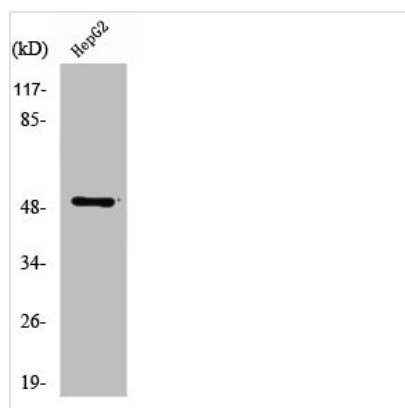




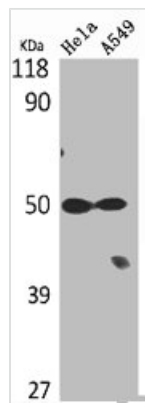
TUBA1A/TUBA1B Antibody

Product Code	CSB-PA004344
Storage	Upon receipt, store at -20°C or -80°C. Avoid repeated freeze.
Uniprot No.	Q71U36/P68363
Immunogen	Synthesized peptide derived from the C-terminal region of Human Tubulin α .
Raised In	Rabbit
Species Reactivity	Human, Mouse, Rat
Tested Applications	WB, IHC, IF, ELISA; WB:1:500-1:2000, IHC:1:100-1:300, IF:1:200-1:1000, ELISA:1:5000
Form	Liquid
Conjugate	Non-conjugated
Storage Buffer	Liquid in PBS containing 50% glycerol, 0.5% BSA and 0.02% sodium azide.
Purification Method	The antibody was affinity-purified from rabbit antiserum by affinity-chromatography using epitope-specific immunogen.
Isotype	IgG
Alias	TUBA1A; TUBA3; Tubulin alpha-1A chain; Alpha-tubulin 3; Tubulin B-alpha-1; Tubulin alpha-3 chain; TUBA1B; Tubulin alpha-1B chain; Alpha-tubulin ubiquitous; Tubulin K-alpha-1; Tubulin alpha-ubiquitous chain
Immunogen Species	Homo sapiens (Human)
Target Names	TUBA1A/TUBA1B

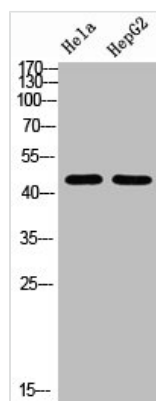
Image



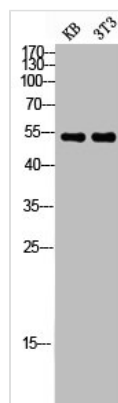
Western Blot analysis of HepG2 cells using Tubulin α Polyclonal Antibody



Western Blot analysis of HeLa A549 cells using
Tubulin α Polyclonal Antibody



Western Blot analysis of HELA HEPG2 using
Tubulin α Polyclonal Antibody



Western blot analysis of KB 3T3 lysis using
Tubulin α antibody.